

KCP CONCRETE PUMPS

LINE PUMPS & PLACING BOOMS

2019



- **SIMPLE HYDRAULIC SYSTEM**
- **COMPATIBLE PARTS & EASY MAINTENANCE**
- **HIGH FUEL EFFICIENCY**
- **EXCELLENT QUALITY & PRICE**
- **ONE OF THE TOP 5 MANUFACTURERS & SELLERS IN THE WORLD**
- **KCP CONCRETE PUMPS SUPPLIES PUMPS TO OVER 40 COUNTRIES INCLUDING: USA, CANADA, AUSTRALIA, SAUDI ARABIA, & RUSSIA**



LINE PUMPS & PLACING BOOMS



STATIONARY LINE PUMPS	Page
KTP 1160-6 HPS	4
KTP 1160-7 HP	5
KTP 2210	6
KTP 2812	7



TRUCK MOUNTED LINE PUMPS	Page
KML 1714	8
KML 2812	9



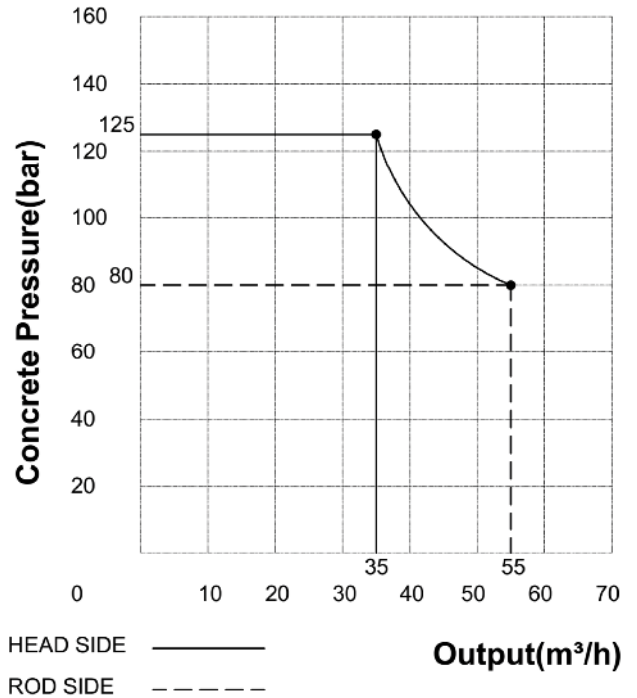
PLACING BOOMS	Page
KB M24Z	10
KB M28Z	11
KB M32R	12
KB M33Z5	13
KB M36R	14
KB M 38Z5	15
KB M52 RZ	16
KB M56RZ	17
KB M60RZ	18

KTP II60-6 HPS

TRAILER

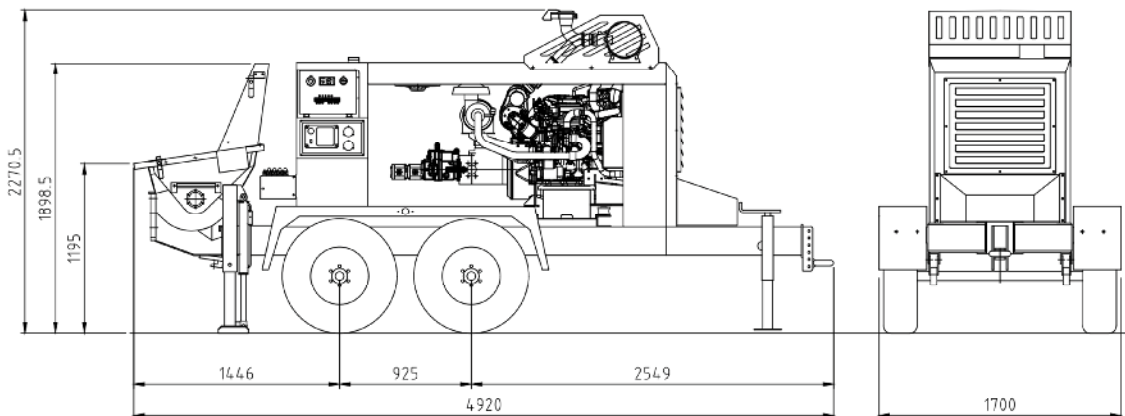


PERFORMANCE DIAGRAM



PUMP SPECIFICATIONS

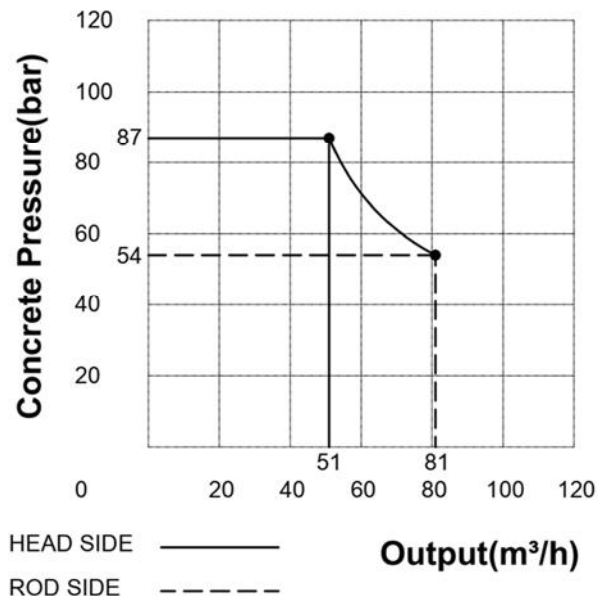
Engine	Cat - C3.4B (100HP)
Engine rpm	1900 rpm
Maximum output	35(High) 55(Low)(m³/h)
Main cylinder	Ø90/Ø55 x 1100st (3.1/2"/2"x 3'-7")
Concrete cylinder	Ø150 x 1100st
Cycling system	Hydraulic with manual overrides
Strokes per minute	30(High) 48(low)
Concrete pressure	125(High) 80(low) (bar)
Hopper capacity	0.4 m³
Stube	Ø180 x Ø120mm (7" x 5")
Hydraulic pump	Kawasaki 117S
Max. aggregate size	40mm (1-1/2")



KTP II60-7 HP

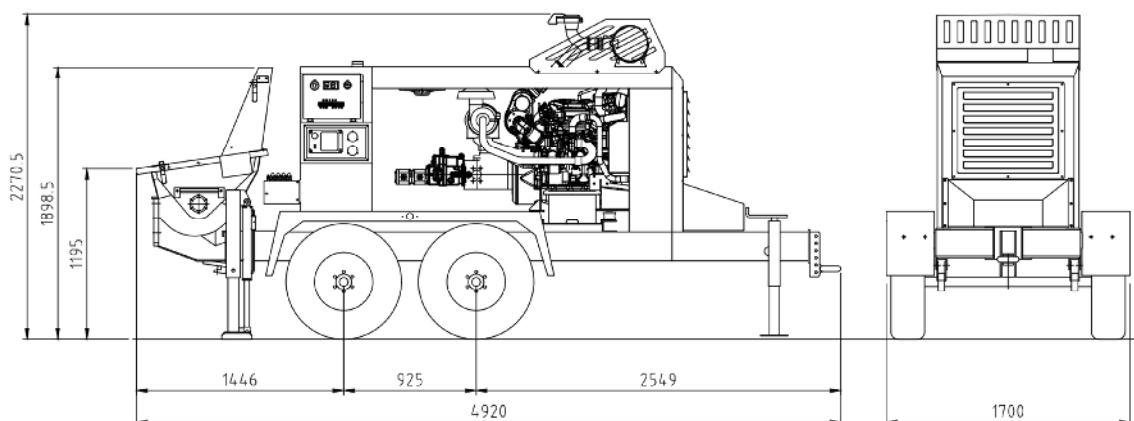
TRAILER

PERFORMANCE DIAGRAM



PUMP SPECIFICATIONS

Engine	Cat - C3.4B (100HP)
Engine rpm	1900 rpm
Maximum output	51(High) 81(Low) m³/h
Main cylinder	Ø90/Ø55 x 1100st (3'-1 1/2"/2"x 3'-7")
Concrete cylinder	Ø180 x 1100st
Cycling system	Hydraulic with manual overrides
Strokes per minute	30(High) 48(Low)
Concrete pressure	187(High) 544(Low) bar
Hopper capacity	0.4 m³
S-tube	Ø180 x Ø120mm (7" x 5")
Hydraulic pump	Kawasaki 117S
Max. aggregate size	40mm (1-1/2")



KTP 2210

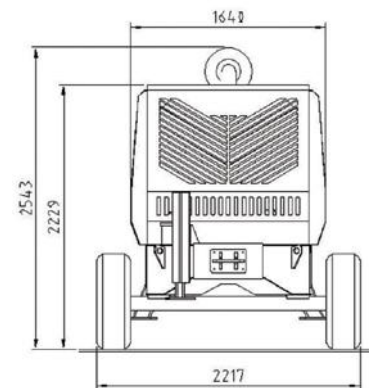
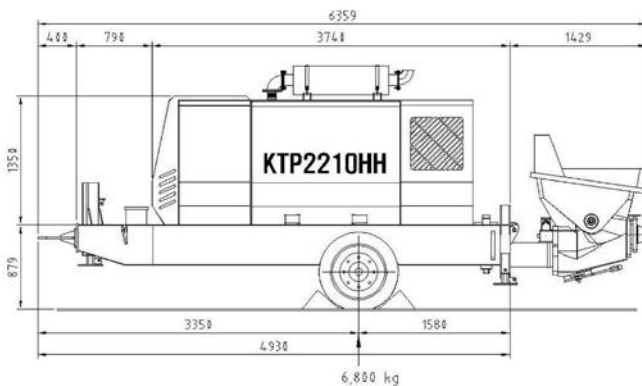
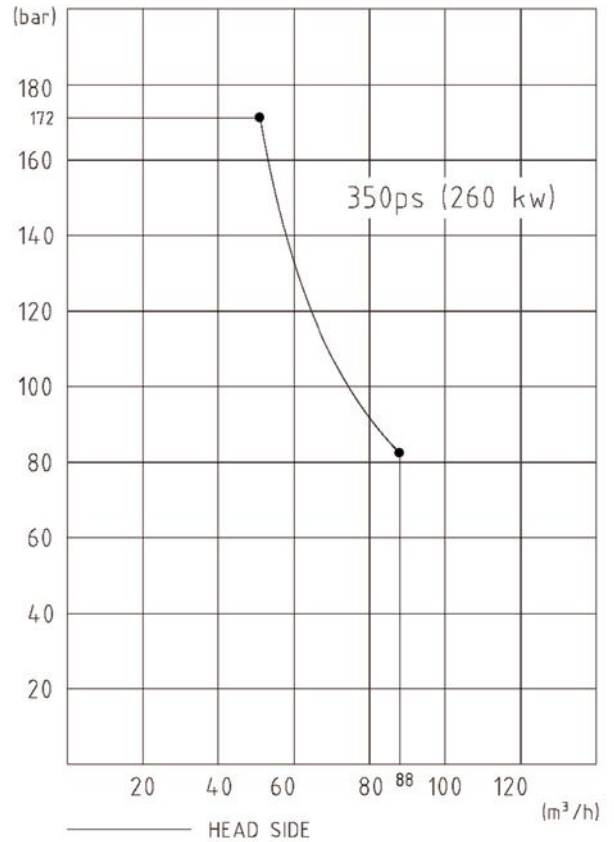
STATIONARY

PERFORMANCE DIAGRAM



PUMP SPECIFICATIONS

Engine	Cat - C13 ACERT (385HP)
Engine rpm	1900 rpm
Maximum output	88 m ³ /h[high] (115 yd ³ /hr)
Main cylinder	Ø140/Ø80 x 1800st (5-1/2"/3"x 6')
Concrete cylinder	Ø200 x 1800st (8"x 6')
Cycling system	Hydraulic with manual overrides
Strokes per minute	26 (High)
Concrete pressure	172 bar[High] 2,495 psi
Hopper capacity	0.6 m ³ 21ft ³
S-tube	Ø200 x Ø180mm (8" x 7")
Hydraulic pump	REXROTH 190D
Max. aggregate size	40mm (1-1/2")



KTP 2812

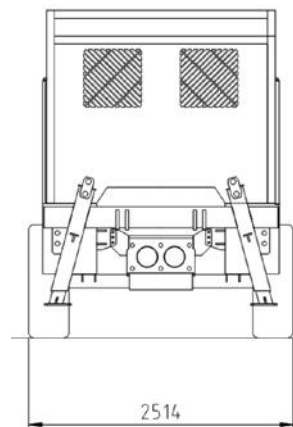
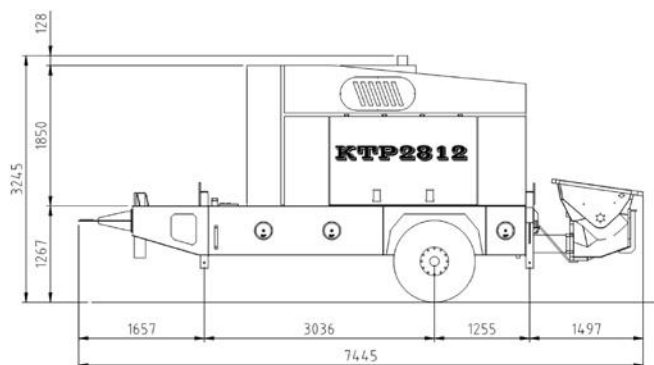
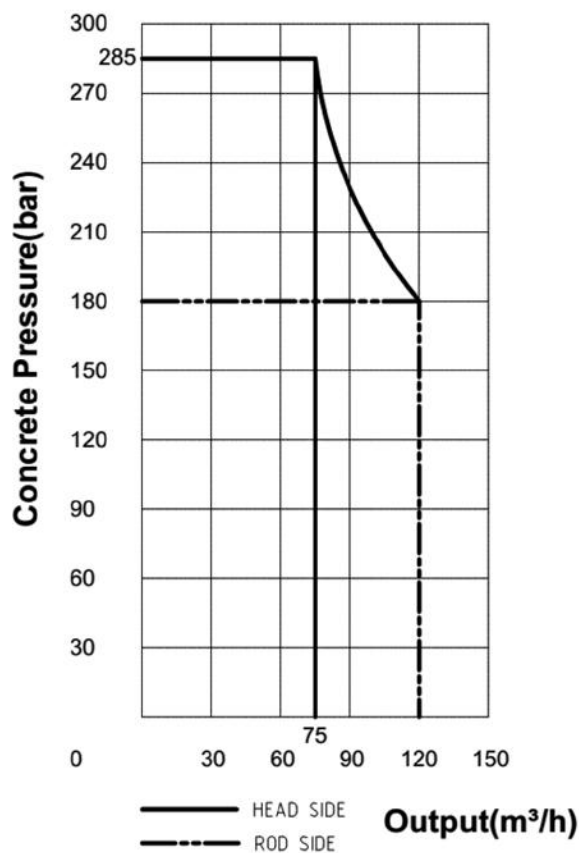
STATIONARY

PERFORMANCE DIAGRAM



PUMP SPECIFICATIONS

Engine	Cat - C18
Engine rpm	1800 rpm
Maximum output	75 (High) m ³ /h (98 yd ³ /h)
Main cylinder	Ø180/Ø110 x 2100st (7"x 7")
Concrete cylinder	Ø200 x 2100st (8"x 7")
Cycling system	Hydraulic with manual overrides
Strokes per minute	20 (High)
Concrete pressure	285 (High) bar 4,134 psi
Hopper capacity	0.6 m ³ 21 ft ³
Stube	Ø200 x Ø180mm (8" x 7")
Hydraulic pump	Kawasaki 280DT
Max. aggregate size	40mm (1-1/2")



KML I714

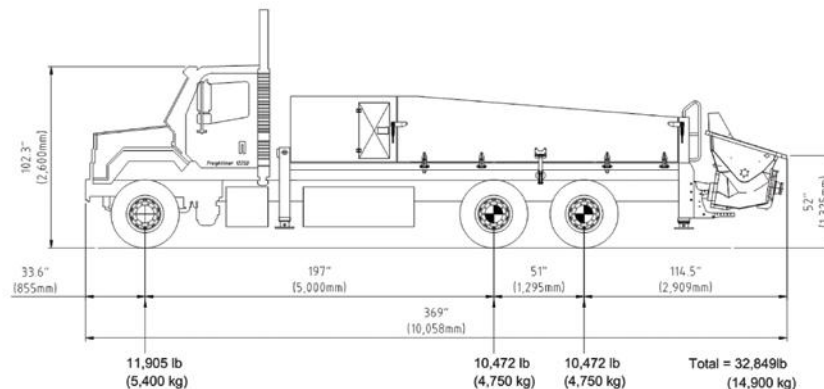
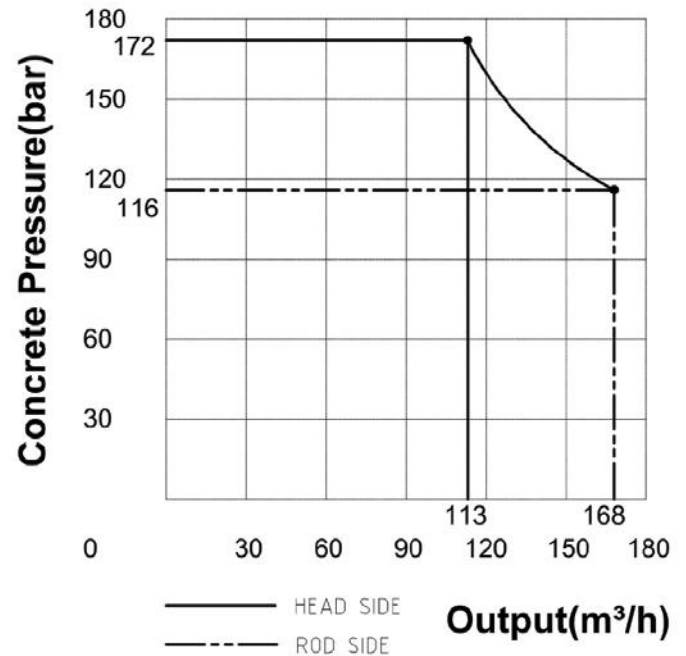
TRUCK MOUNTED

PERFORMANCE DIAGRAM



PUMP SPECIFICATIONS

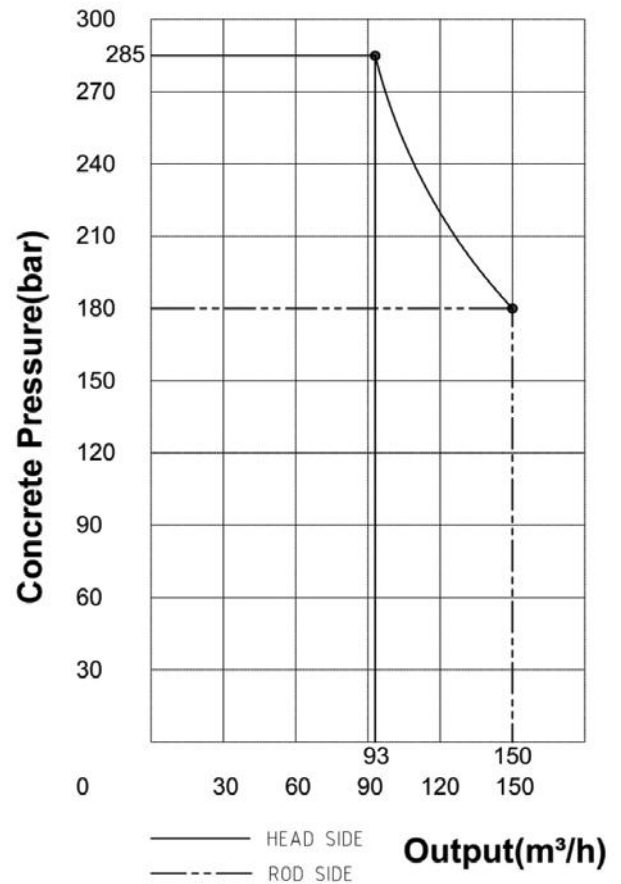
Engine rpm	1550 rpm
Maximum output	113 (High) m ³ /h [148 yd ³ /h]
Main cylinder	Ø80 x 140mm [5.5"/3.1"]
Concrete cylinder	Ø200 x 1800mm [8"x 5'11"]
Cycling system	Hydraulic with manual overrides
Strokes per minute	33 (High)
Concrete pressure	172 (High) bar 2,494 psi
Hopper capacity	0.4 m ³ 14'
S-tube	Ø180 x 200mm [7" x 8"]
Hydraulic pump	Kawasaki 200DT
Max. aggregate size	40mm [1.5"]



KML 2812

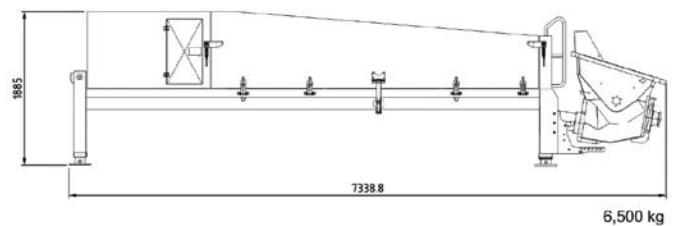
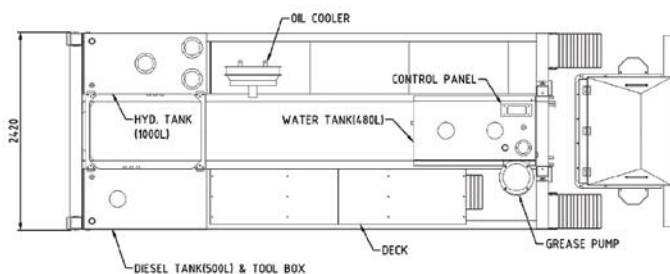
TRUCK MOUNTED

PERFORMANCE DIAGRAM



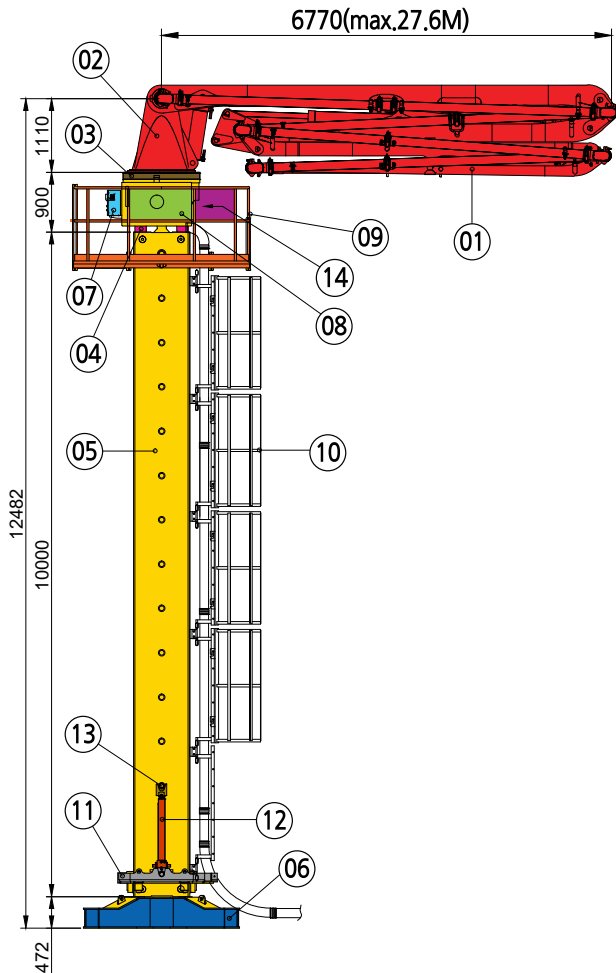
PUMP SPECIFICATIONS

Engine rpm	1800 rpm
Maximum output	93 m³/h (122 yd³/h)
Main cylinder	Ø180/Ø110 x 2100st (7"/4" x 6'-11")
Concrete cylinder	Ø200 x 2100st (8" x 6'-11")
Cycling system	Hydraulic with manual overrides
Strokes per minute	23 (High)
Concrete pressure	285 (High), 180 (Low) bar
Hopper capacity	0.6 m³ 21 ft³
Stube	Ø200 x Ø150 mm (8" x 6")
Hydraulic pump	Rexroth 260D
Max. aggregate size	40mm (1-1/2")
Outtrigger	Hydraulic Vertical ext.



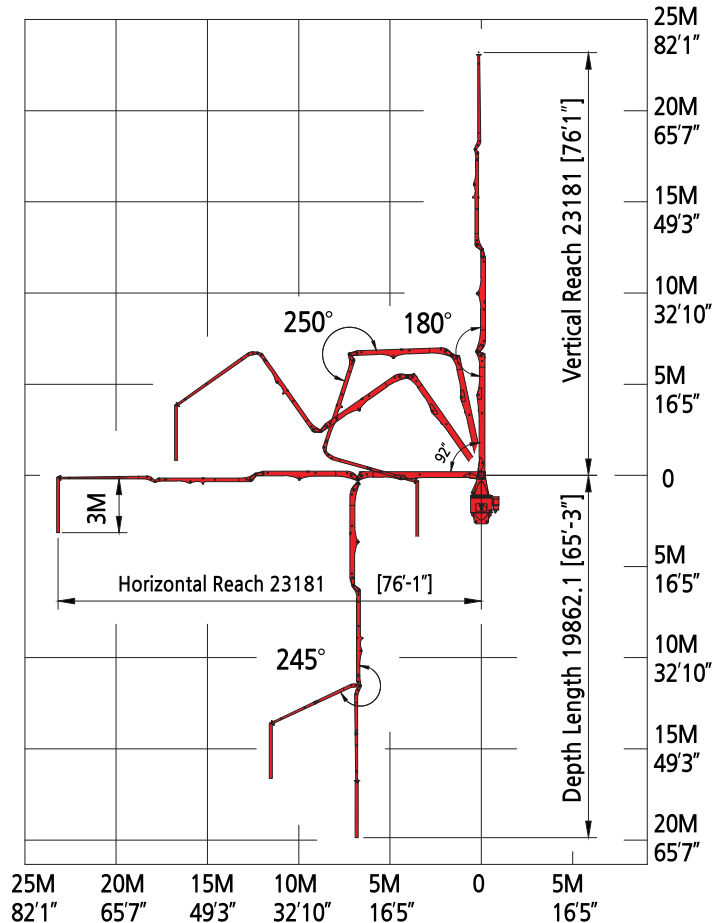
KB - M24Z

PLACING BOOM



#	ITEM
01	Boom assembly M
02	Turn table
03	Slewing gear
04	Turning base
05	Tower mast
06	Base Anchor
07	Electric Panel
08	Oil Tank
09	Working Platform
10	Ladder
11	Frame Climbing
12	Climbing Cylinder
13	Pin Climbing
14	Electric Motor+Boom Pump

WORKING DIAGRAM

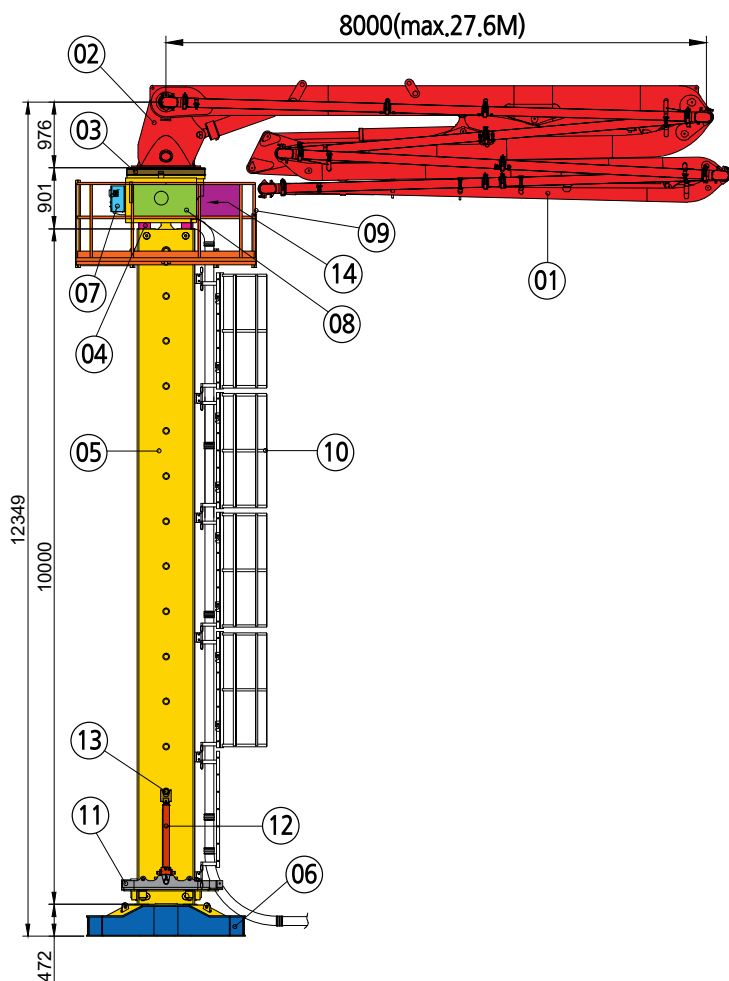


BOOM SPECIFICATIONS

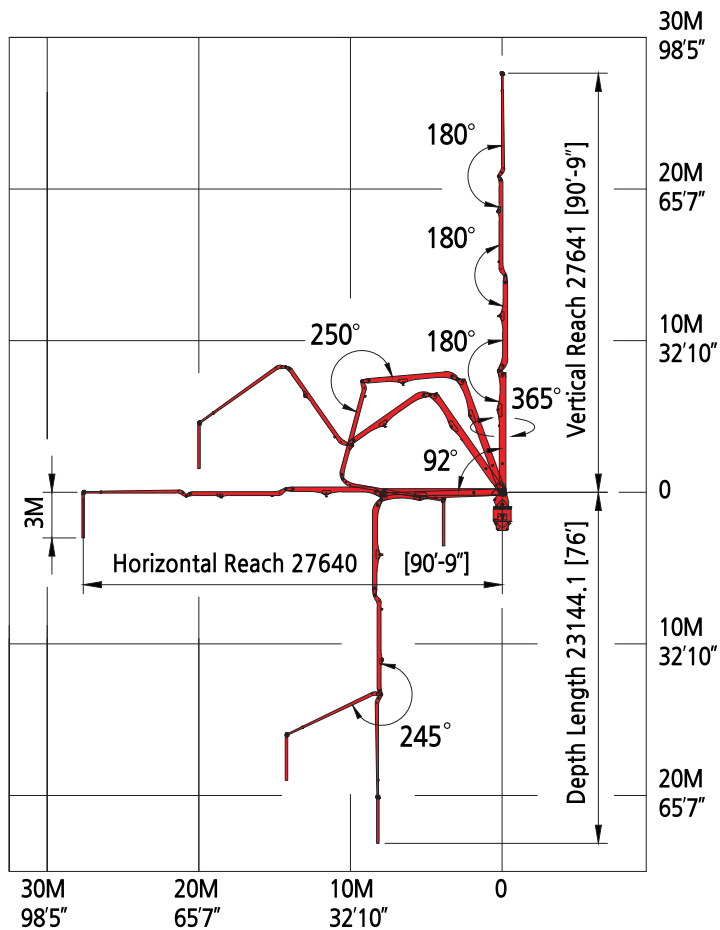
Boom type		4 Section Z type
Horizontal reach		23.2M (76' 1")
Depth reach		19.9M (65' 3")
Section articulation		92°/180°/250°/245°
Rotation		370°
Delivery line		125mm (5")
Proportional boom		Yes
End hose length		3M (9' 10")
Total weight	In operation	7,300kg (16,093lbs)
	out of operation	13.63kg (14,330lbs)

KB - M28Z

PLACING BOOM



WORKING DIAGRAM



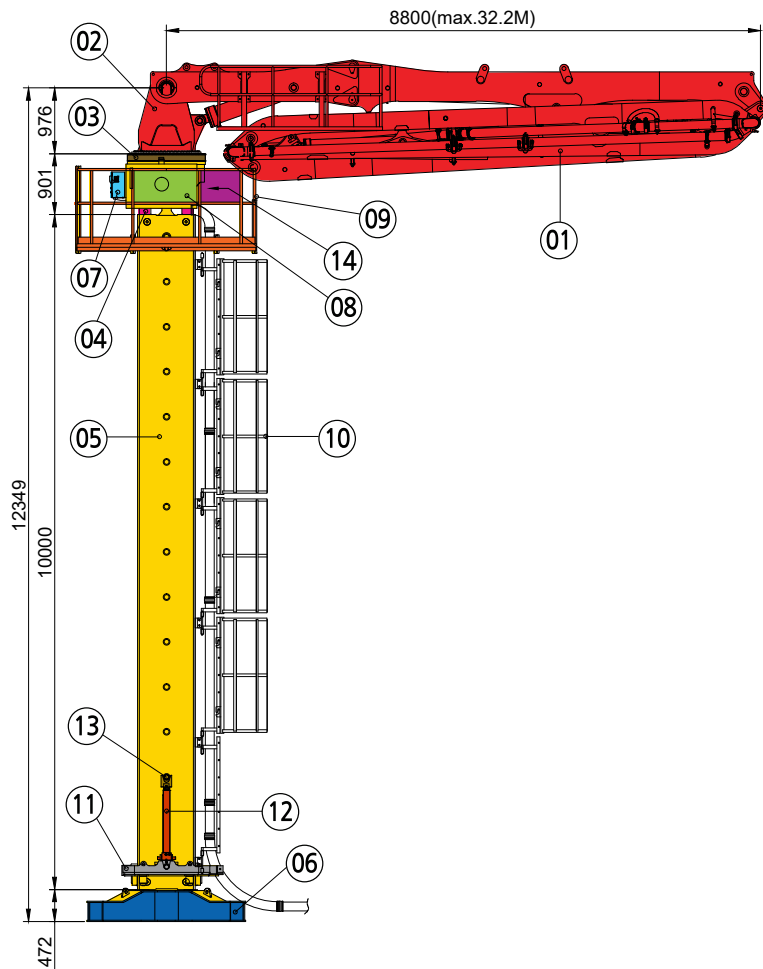
#	ITEM
01	Boom assembly M
02	Turn table
03	Slewing gear
04	Turning base
05	Tower mast
06	Base Anchor
07	Electric Panel
08	Oil Tank
09	Working Platform
10	Ladder
11	Frame Climbing
12	Climbing Cylinder
13	Pin Climbing
14	Electric Motor+Boom Pump

BOOM SPECIFICATIONS

Boom type		4 Section Z type
Horizontal reach		27.6M (90' 9")
Depth reach		23.1M (76')
Section articulation		92°/180°/250°/245°
Rotation		365°
Delivery line		125mm (5")
Proportional boom		Yes
End hose length		3M (9' 10")
Total weight	In operation	7,860kg (21164lbs)
	out of operation	7,060kg (18,739lbs)

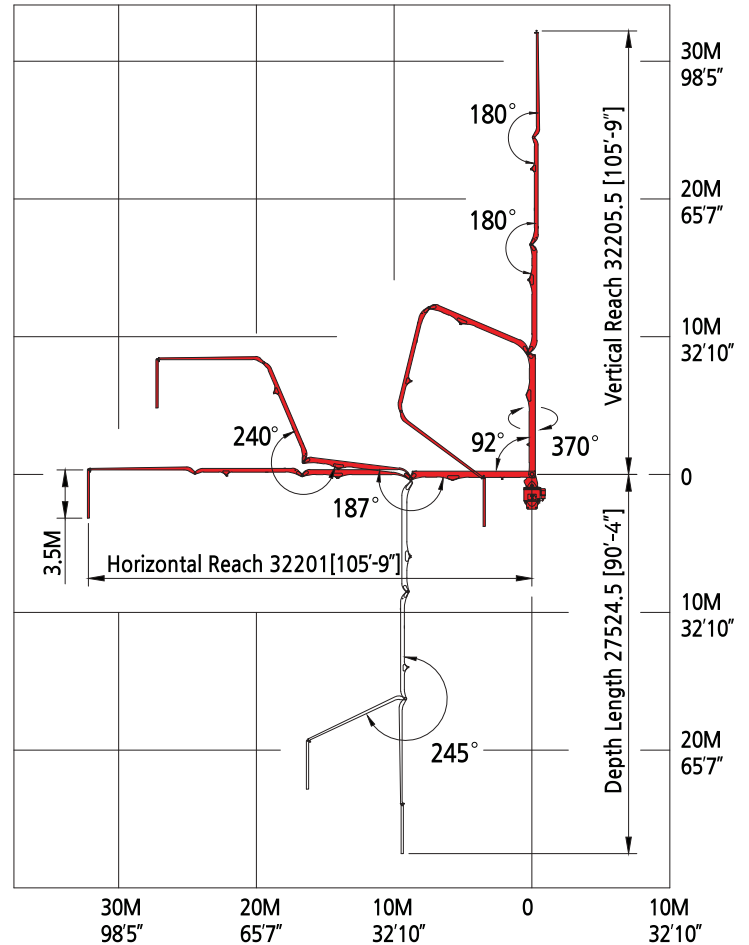
KB - M32R

PLACING BOOM



#	ITEM
01	Boom assembly M
02	Turn table
03	Slewing gear
04	Turning base
05	Tower mast
06	Base Anchor
07	Electric Panel
08	Oil Tank
09	Working Platform
10	Ladder
11	Frame Climbing
12	Climbing Cylinder
13	Pin Climbing
14	Electric Motor+Boom Pump

WORKING DIAGRAM



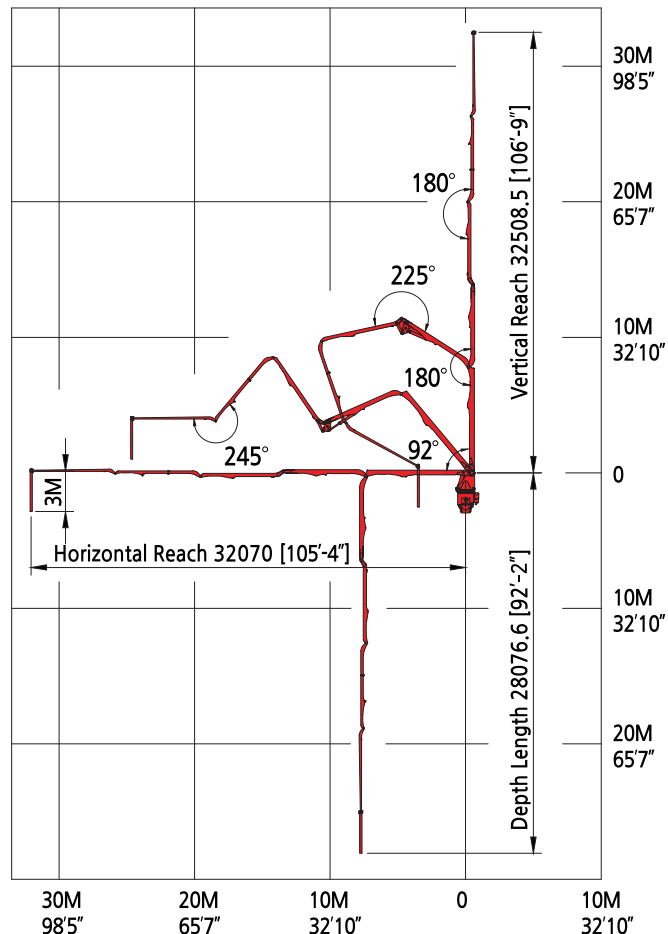
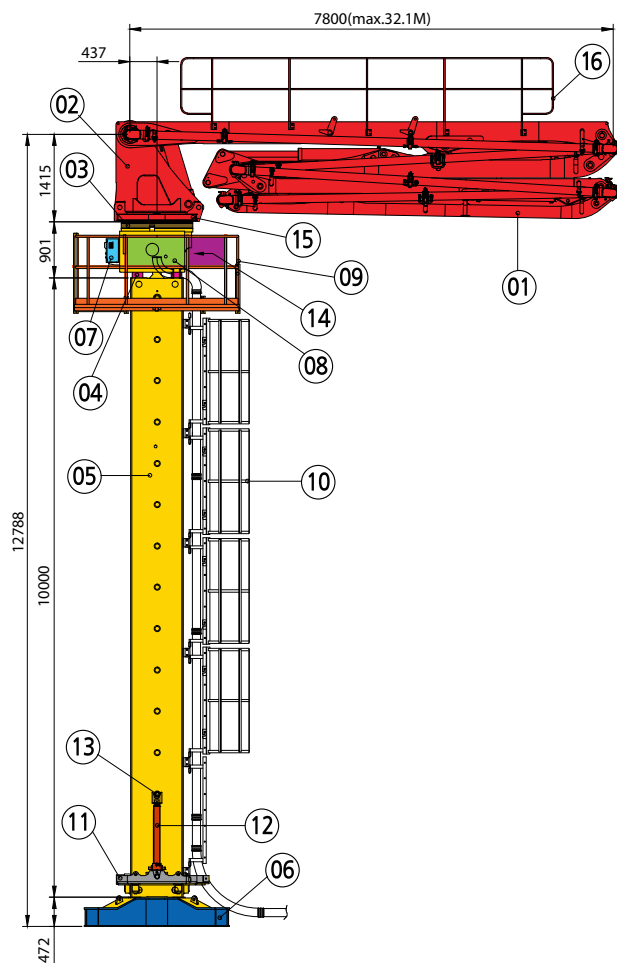
BOOM SPECIFICATIONS

Boom type		4 Section roll type
Horizontal reach		32.2M (105' 9")
Depth reach		27.7M (90' 9")
Section articulation		94°/180°/240°/245°
Rotation		365°
Delivery line		125mm (5")
Proportional boom		Yes
End hose length		3.5M 11' 6")
Total weight	In operation	8,500kg (18,739lbs)
	out of operation	7,600kg (16,755lbs)

KB - M33Z5

PLACING BOOM

WORKING DIAGRAM



#	ITEM
01	Boom assembly M
02	Turn table
03	Slewing gear
04	Turning base
05	Tower mast
06	Base Anchor
07	Electric Panel
08	Oil Tank
09	Working Platform
10	Ladder
11	Frame Climbing
12	Climbing Cylinder
13	Pin Climbing
14	Electric Motor+Boom Pump

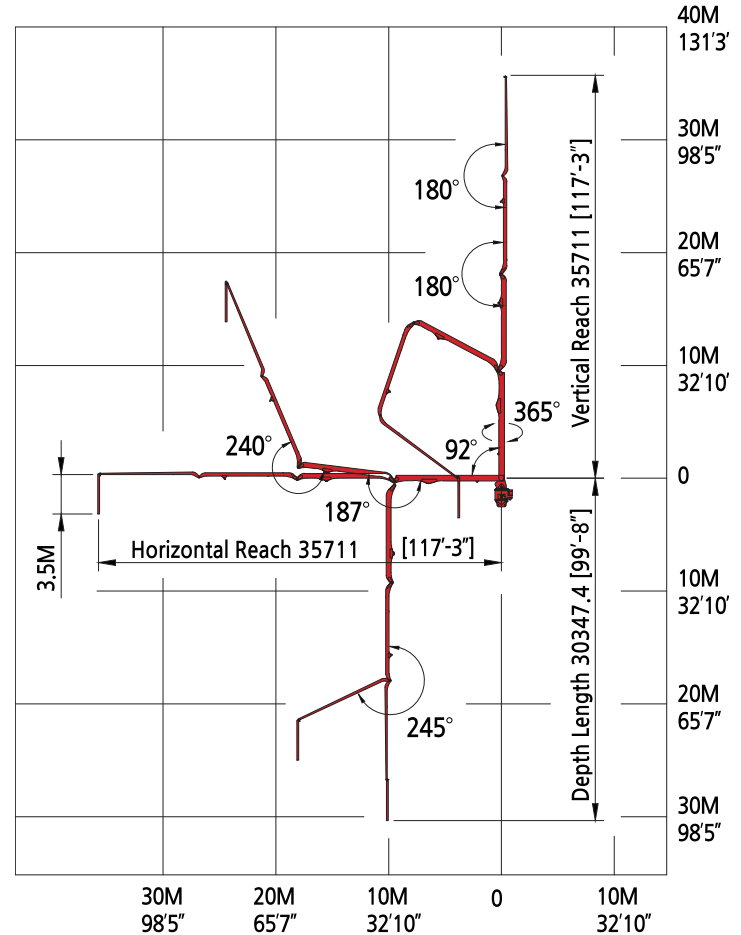
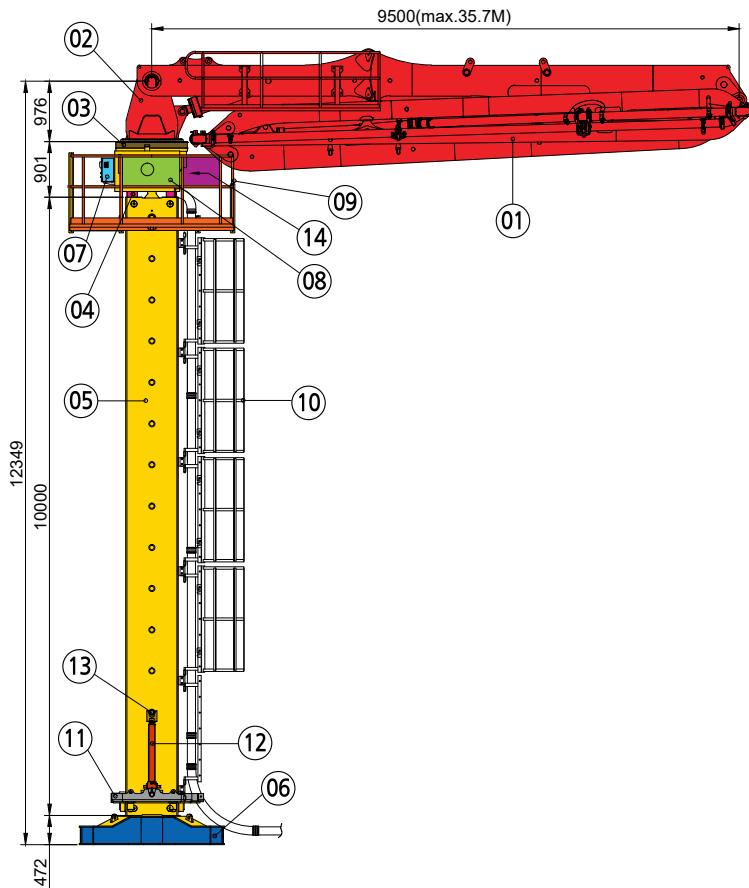
BOOM SPECIFICATIONS

Boom type		5 Section Z type
Horizontal reach		32.1M (105' 4")
Depth reach		28.1M (92' 2")
Section articulation		92°/180°/225°/180°/245°
Rotation		370°
Delivery line		125mm (5")
Proportional boom		Yes
End hose length		3.5M (11' 6")
Total weight	In operation	7,960kg (17,548lbs)
	out of operation	7,000kg (15,432lbs)

KB - M36R

PLACING BOOM

WORKING DIAGRAM



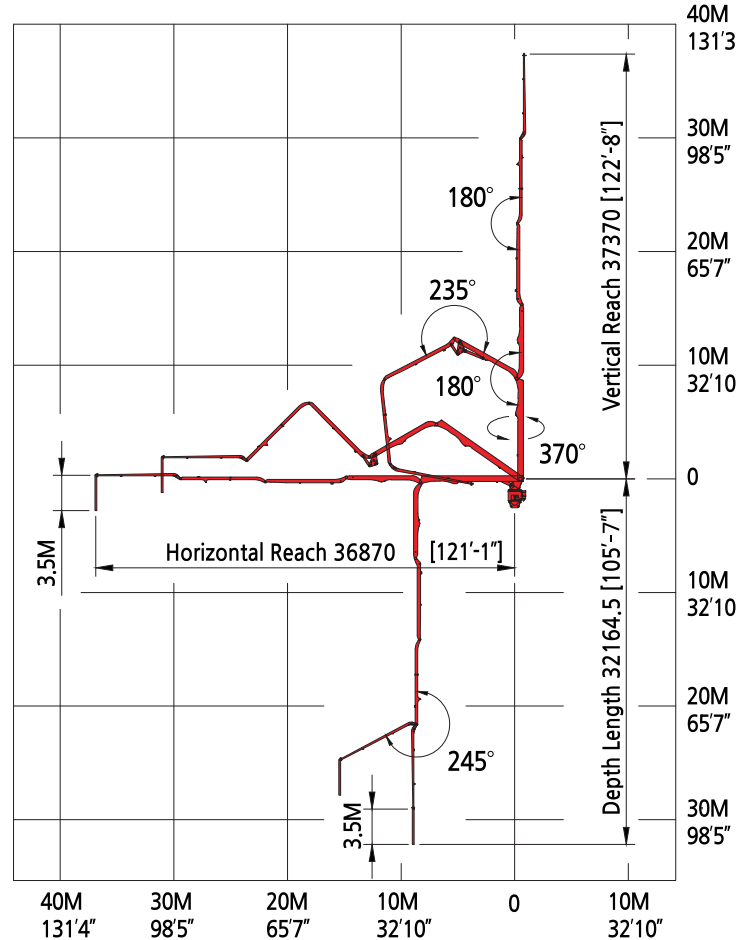
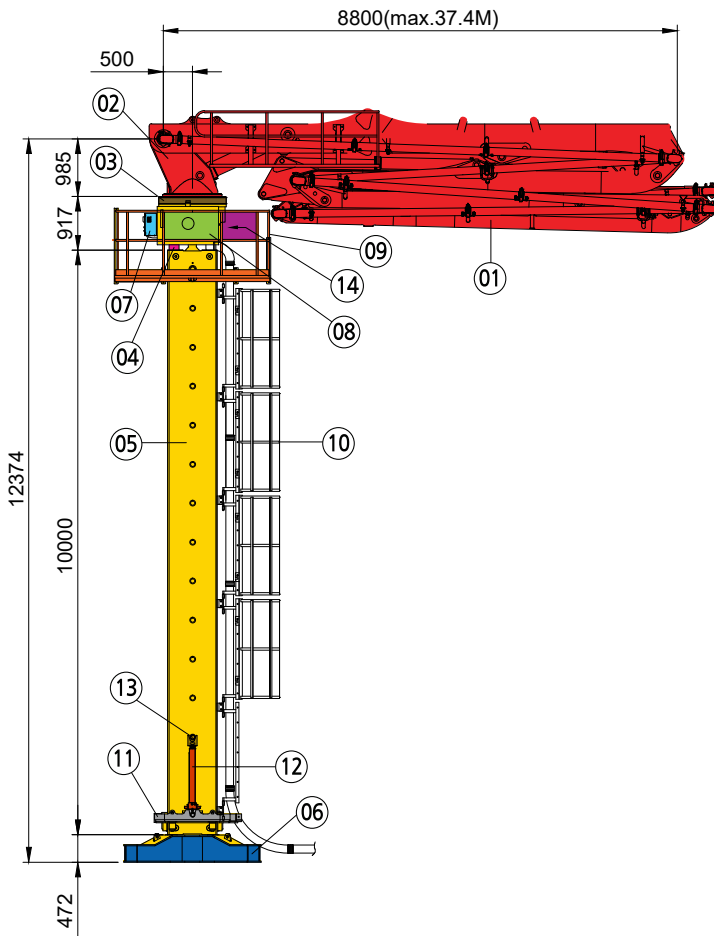
#	ITEM
01	Boom assembly M
02	Turn table
03	Slewing gear
04	Turning base
05	Tower mast
06	Base Anchor
07	Electric Panel
08	Oil Tank
09	Working Platform
10	Ladder
11	Frame Climbing
12	Climbing Cylinder
13	Pin Climbing
14	Electric Motor+Boom Pump

BOOM SPECIFICATIONS		
Boom type		4 Section roll type
Horizontal reach		35.7M [117' 3"]
Depth reach		30.3M [99' 8"]
Section articulation		92°/180°/240°/245°
Rotation		370°
Delivery line		125mm [5"]
Proportional boom		Yes
End hose length		3.5M [11' 6"]
Total weight	In operation	9,600kg [21164lbs]
	out of operation	8,500kg [18,739lbs]

KB - M38Z5

PLACING BOOM

WORKING DIAGRAM



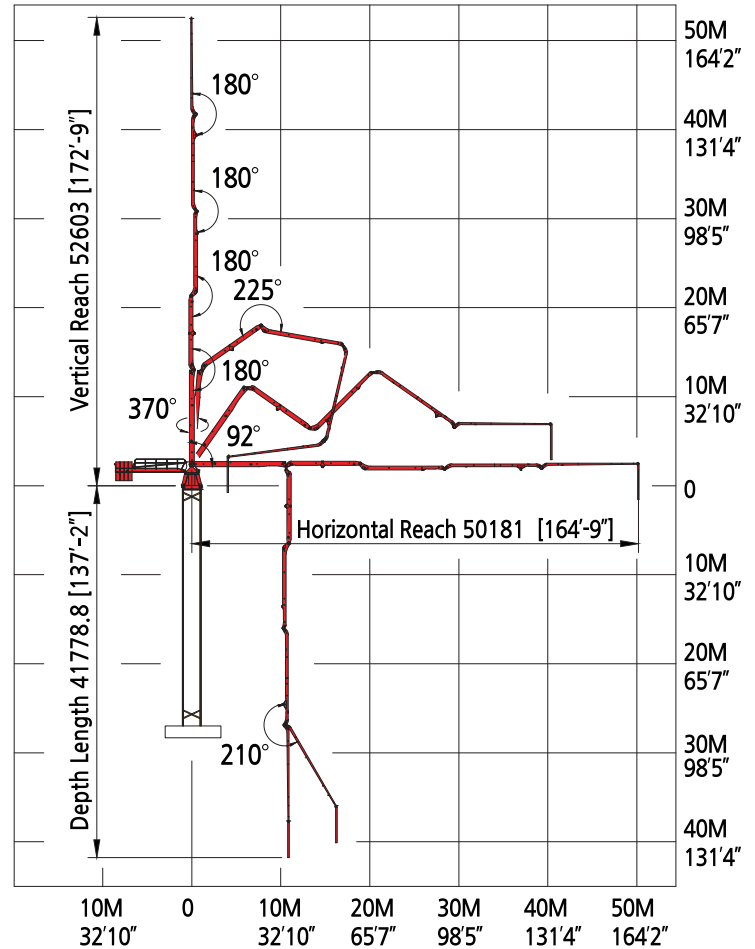
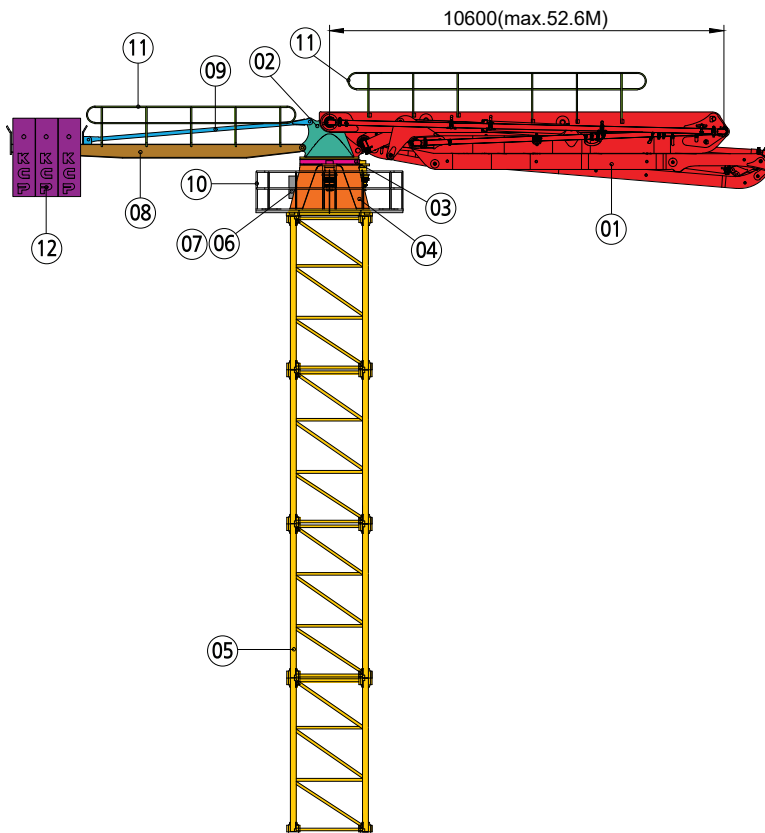
#	ITEM
01	Boom assembly M
02	Turn table
03	Slewing gear
04	Turning base
05	Tower mast
06	Base Anchor
07	Electric Panel
08	Oil Tank
09	Working Platform
10	Ladder
11	Frame Climbing
12	Climbing Cylinder
13	Pin Climbing
14	Electric Motor+Boom Pump
15	Boom Deck

BOOM SPECIFICATIONS		
Boom type		5 Section Z type
Horizontal reach		36.9M [121' 1"]
Depth reach		32.2M [105' 7"]
Section articulation		92°/180°/235°/180°/245°
Rotation		370°
Delivery line		125mm [5"]
Proportional boom		Yes
End hose length		3.5M [11' 6"]
Total weight	In operation	10,150kg [22376lbs]
	out of operation	9,000kg [19,841lbs]

KB - M52RZ

PLACING BOOM

WORKING DIAGRAM



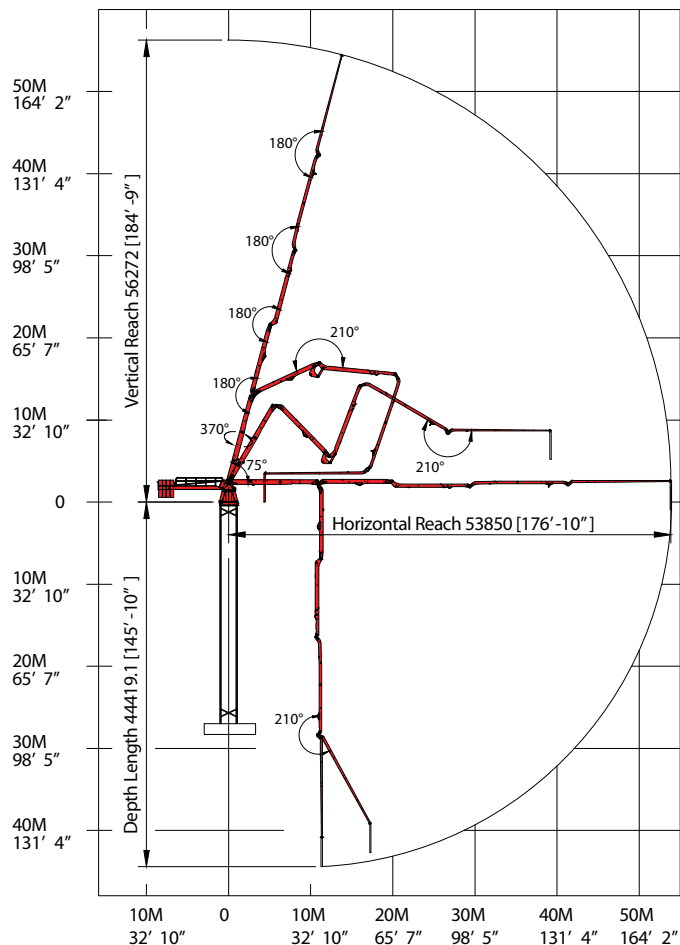
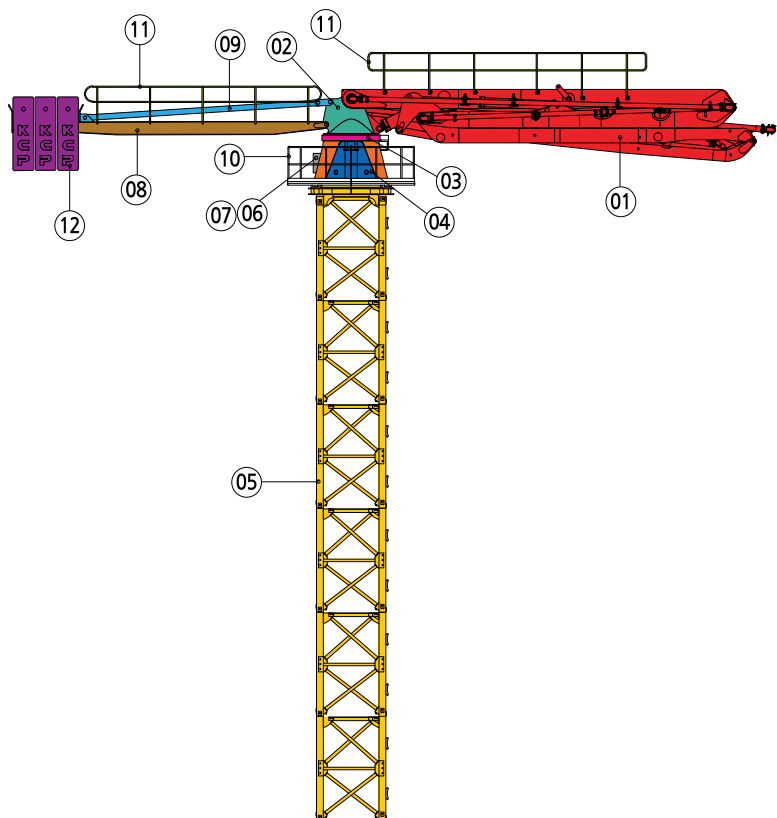
#	ITEM
01	Boom assembly M
02	Turn table
03	Slewing gear
04	Turning base
05	Tower mast
06	Electric Motor+Boom Pump
07	Electric Panel
08	Counter Jib
09	Tie Rod
10	Working Platform
11	Guide Rail
12	Counter Weight

BOOM SPECIFICATIONS		
Boom type		5 Section Z type
Horizontal reach		50.2M [164' 9"]
Depth reach		41.8M [137' 2"]
Section articulation		75°/180°/225°/190°/210°
Rotation		370°
Delivery line		125mm [5"]
Proportional boom		Yes
End hose length		3.5M [11' 6"]
Total weight	In operation	33,400kg [73,634lbs]
	out of operation	31,950kg [70,437lbs]

KB - M56RZ

PLACING BOOM

WORKING DIAGRAM



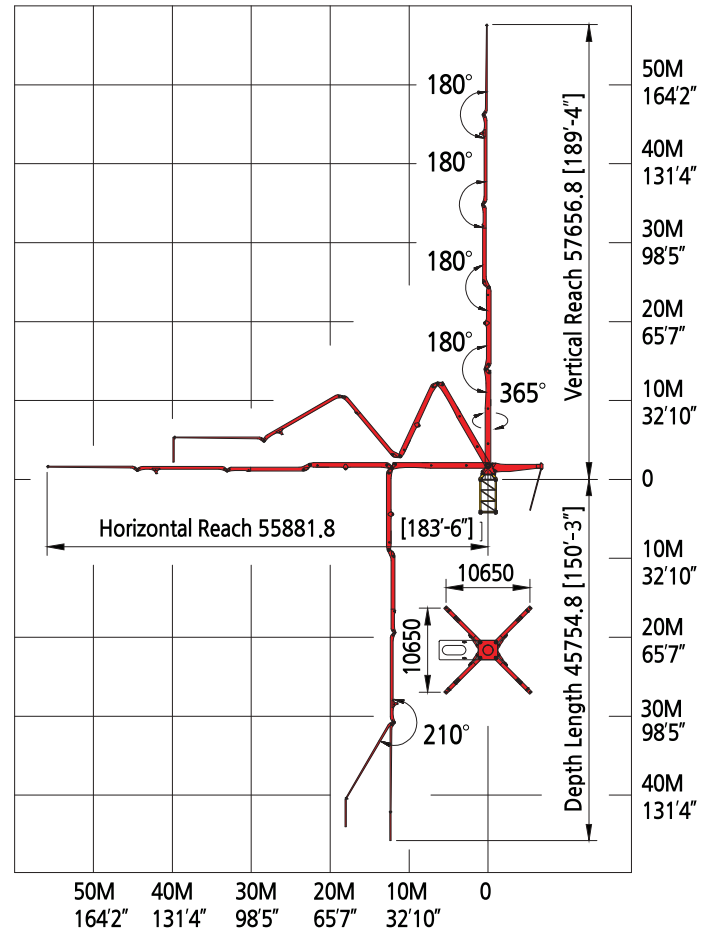
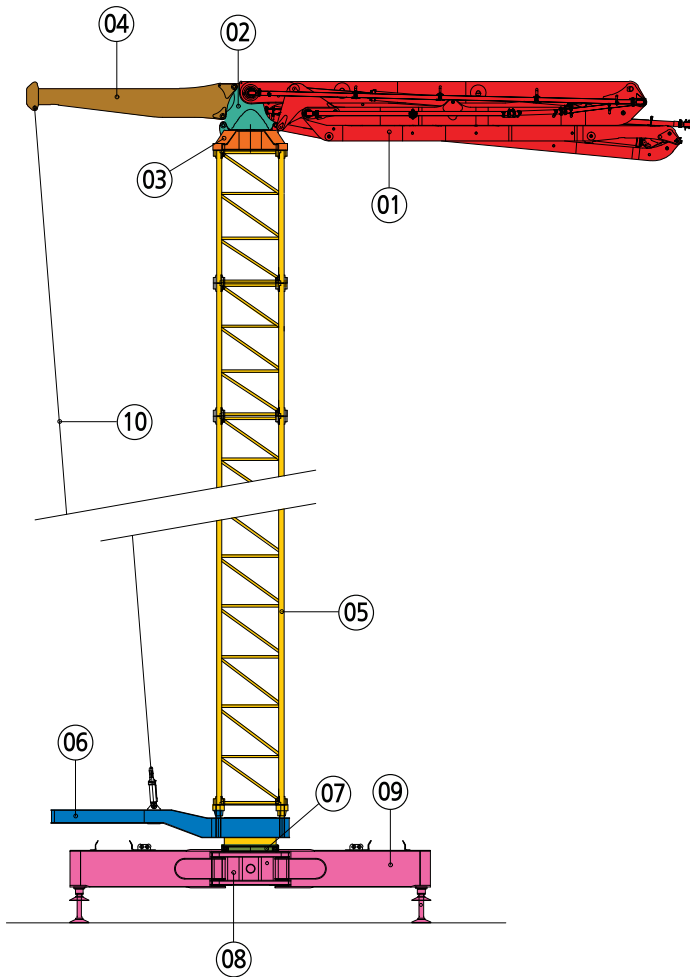
#	ITEM
01	Boom assembly M
02	Turn table
03	Slewing gear
04	Turning base
05	Tower mast
06	Electric Motor+Boom Pump
07	Electric Panel
08	Counter Jib
09	Tie Rod
10	Working Platform
11	Guide Rail
12	Counter Weight

BOOM SPECIFICATIONS		
Boom type		5 Section Z type
Horizontal reach		53.9M [176' 10"]
Depth reach		44.4M [145' 10"]
Section articulation		75°/180°/215°/180°/210°
Rotation		370°
Delivery line		125mm [5"]
Proportional boom		Yes
End hose length		3.5M [11' 6"]
Total weight	In operation	35,530kg [78,330lbs]
	out of operation	34,000kg [74,957lbs]

KB - M60RZ

PLACING BOOM

WORKING DIAGRAM



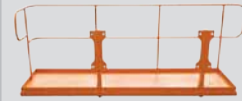
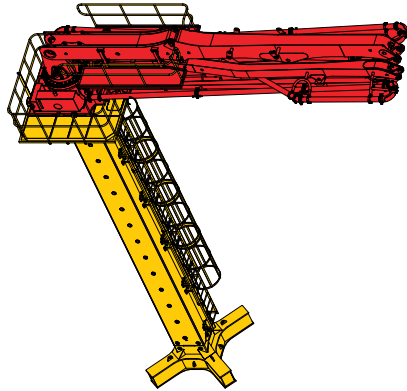
#	ITEM
01	Boom assembly M
02	Table
03	Adapter
04	Counter Boom
05	Tower mast
06	Turn Table
07	Slewing Gear
08	Turning Base
09	Outrigger
10	Tension Bar Assembly

BOOM SPECIFICATIONS		
Boom type		5 Section Z type
Horizontal reach		55.9M [183' 6"]
Depth reach		45.7M [150' 3"]
Section articulation		90°/180°/215°/180°/210°
Rotation		370°
Delivery line		125mm [5"]
Proportional boom		Yes
End hose length		3.5M [11' 6"]
Total weight	In operation	21,000kg [46,297lbs]
	out of operation	3,700kg [8,157lbs]

PLACING BOOM

TYPES

SELF STANDING



BOOM DECK



ELECTRIC MOTOR+BOOM PUMP



ELECTRIC PANEL

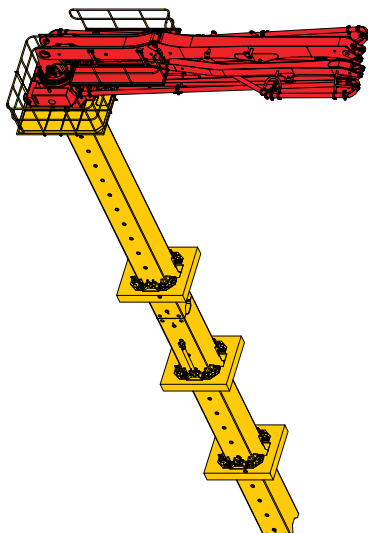


MAST



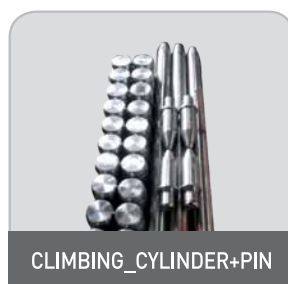
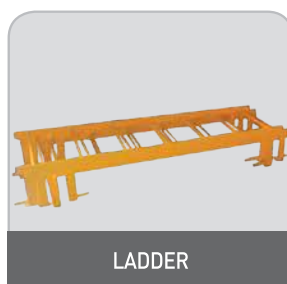
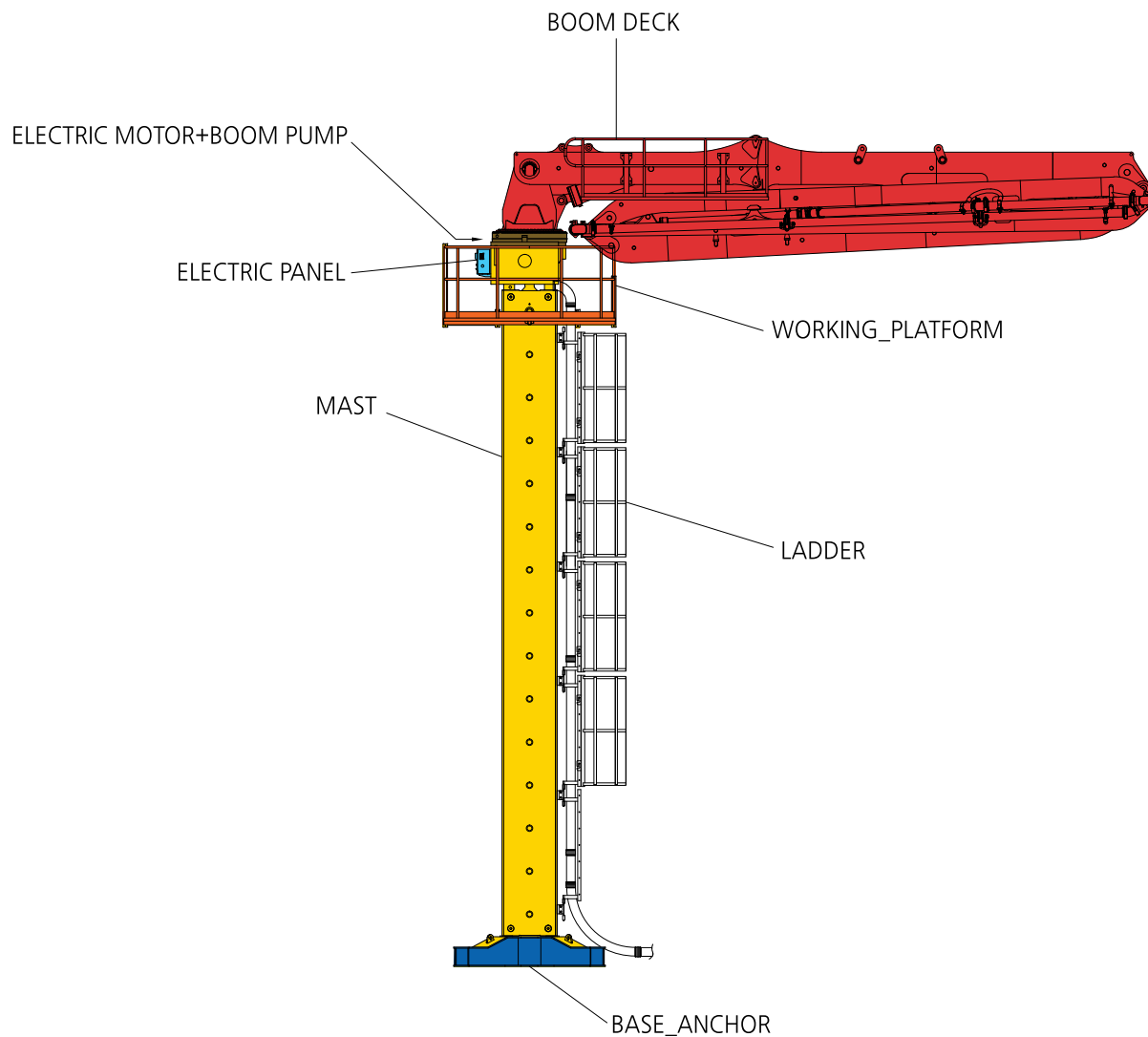
FRAME_CLIMBING

FLOOR TYPE



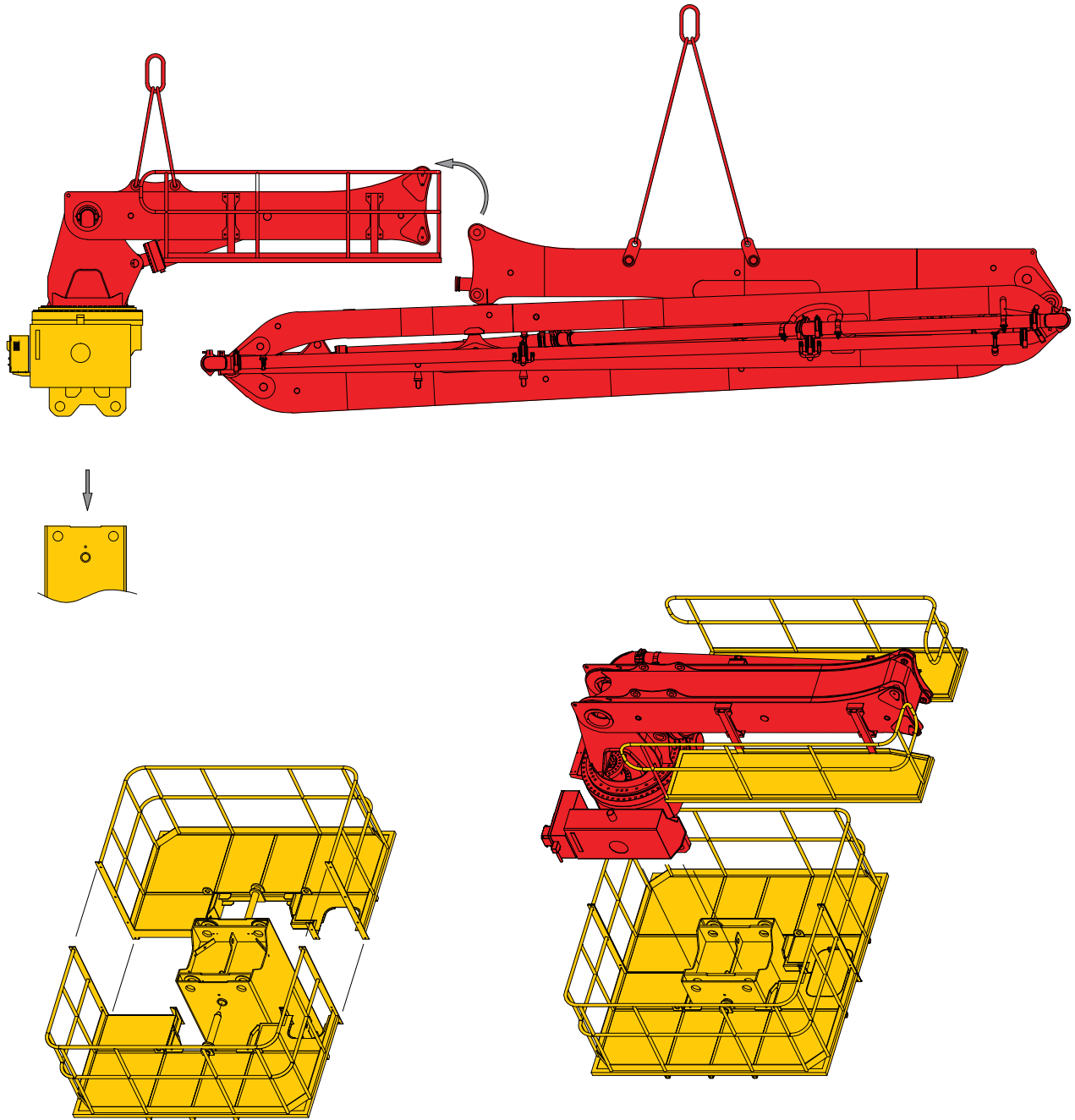
PLACING BOOM

COMPONENTS



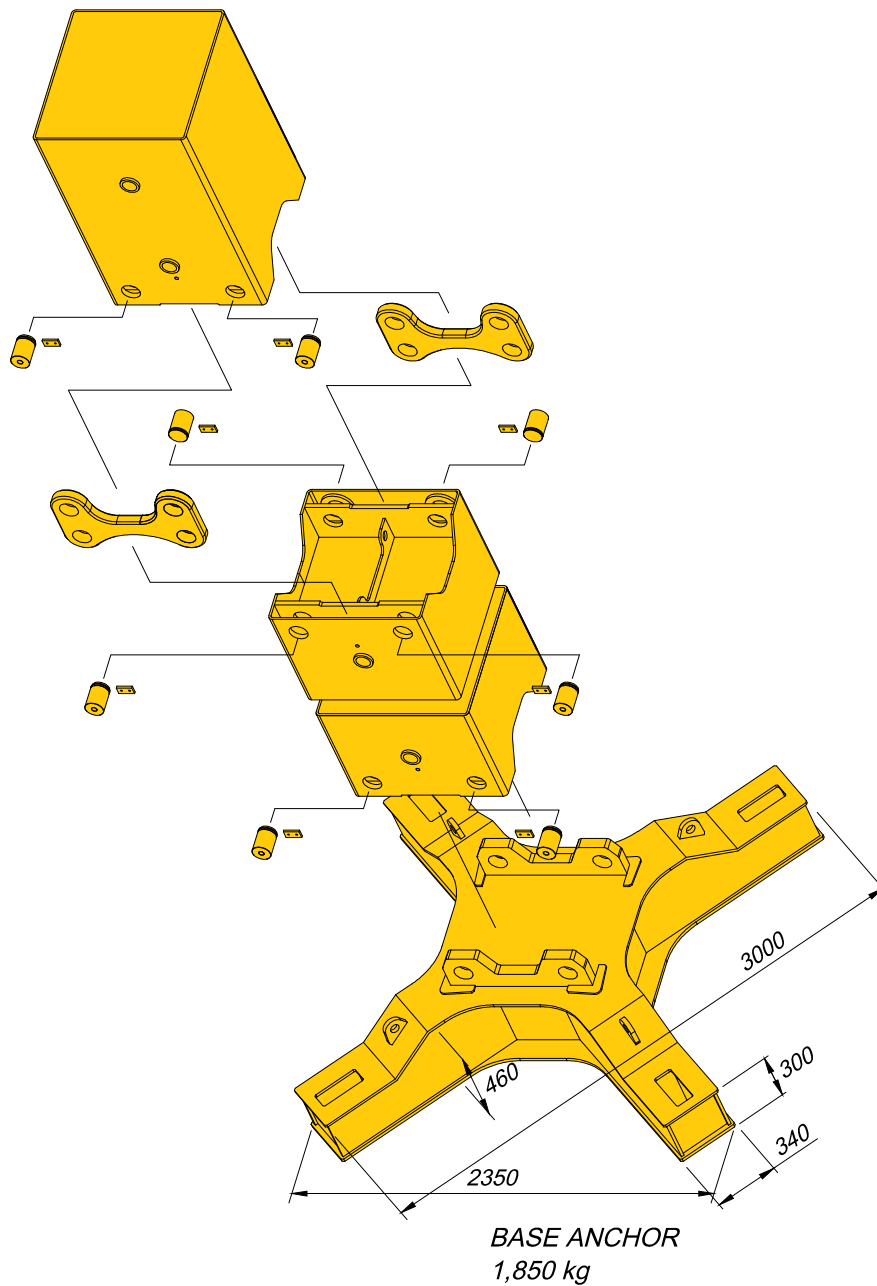
PLACING BOOM

ASSEMBLY & UPPER BODY PARTS



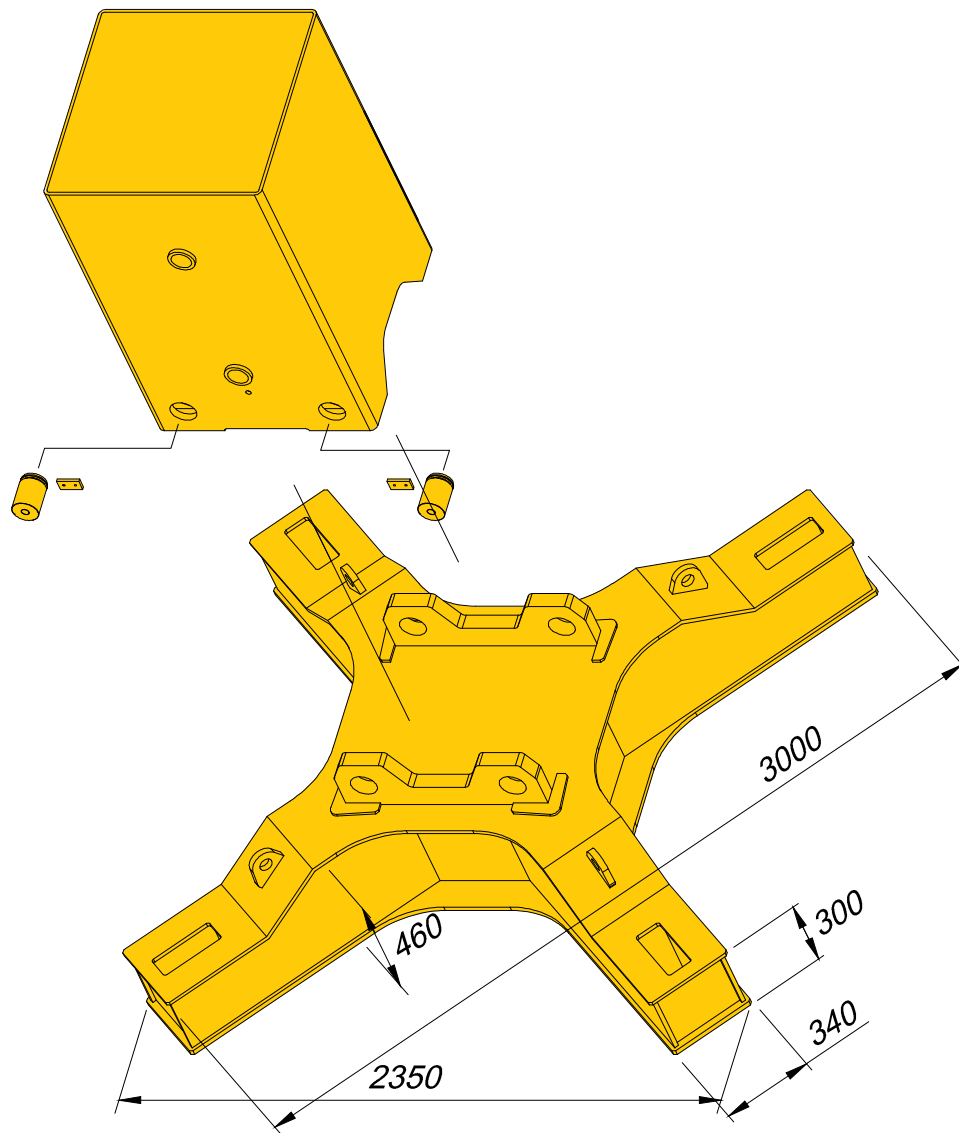
PLACING BOOM

FRAME & CLIMBING CYLINDER



PLACING BOOM

BASE ANCHOR



BASE ANCHOR
1,850 kg

KCP CONCRETE PUMPS



Phone: 1-604-539-2137
Toll Free: 1-866-539-4244
Fax: 1-604-539-2176
Email: info@kcppumps.ca

www.kcppumps.ca

#201-5769 Production Way Langley, BC, CANADA V3A 4N5