

KCP CONCRETE PUMPS



TRUCK MOUNTED
BOOM PUMPS

9102

KCP CONCRETE PUMPS

- **SIMPLE HYDRAULIC SYSTEM**
- **COMPATIBLE PARTS & EASY MAINTENANCE**
- **HIGH FUEL EFFICIENCY**
- **EXCELLENT QUALITY & PRICE**
- **ONE OF THE TOP 5 MANUFACTURERS & SELLERS IN THE WORLD**
- **KCP CONCRETE PUMPS SUPPLIES PUMPS TO OVER 40 COUNTRIES INCLUDING: USA, CANADA, AUSTRALIA, SAUDI ARABIA, & RUSSIA**



TRUCK MOUNTED BOOM PUMPS



KCP70ZS5170HP



KCP65ZS5170HP



KCP60ZX5170HP



KCP55ZX5170HP



KCP52ZX5170HP



KCP46ZX5170HP



KCP40ZX5170



KCP40RX170



KCP38ZX170



KCP37ZX5170



KCP34ZX5170



KCP32RZX5170



KCP31ZX5120



KCP28ZX120



KCP24ZX120



KCP20Z120



KCP70ZS5170HP

BOOM SPECIFICATIONS

Vertical reach	69.45 M	[228' 3"]
Horizontal reach	65.22 M	[214' 2"]
Reach from front of truck	61.90 M	[203' 3"]
Unfolding height	15.6 M	[51' 2"]
Section articulation	92°/180°/200°/180°/200°	
Rotation	370°	
Delivery line	125mm	[5"]
Proportional boom	Yes	
End hose length	3.5 M	[11' 6"]
Outrigger spread-front	13.7M	[45']
Outrigger spread-rear	13.63 M	[44' 9"]
Max. outrigger weight	55,000 kg	[121,254 lbs]

TRUCK MOUNTING OPTIONS

Available: MACK, FREIGHTLINER, AUTOCAR, etc.

PUMP SPECIFICATIONS

Maximum output	170 m³/h	[222 yd³/h]
Concrete cylinder	Ø230 x 2100mm [9" x 83"]	
Stroke per minute	32	
Concrete pressure	95bar	
Hopper capacity	0.6 m³	[21 ft³]
S-tube	Ø230 x Ø180mm [9" x 7"]	
Hydraulic pump	Rexroth A20VLO190	
Cycling system	Hydraulic with manual overrides	
Max aggregate size	40 mm	[1.5"]
Water tank volume	649L	171.4Gal

* Maximum theoretical values listed.

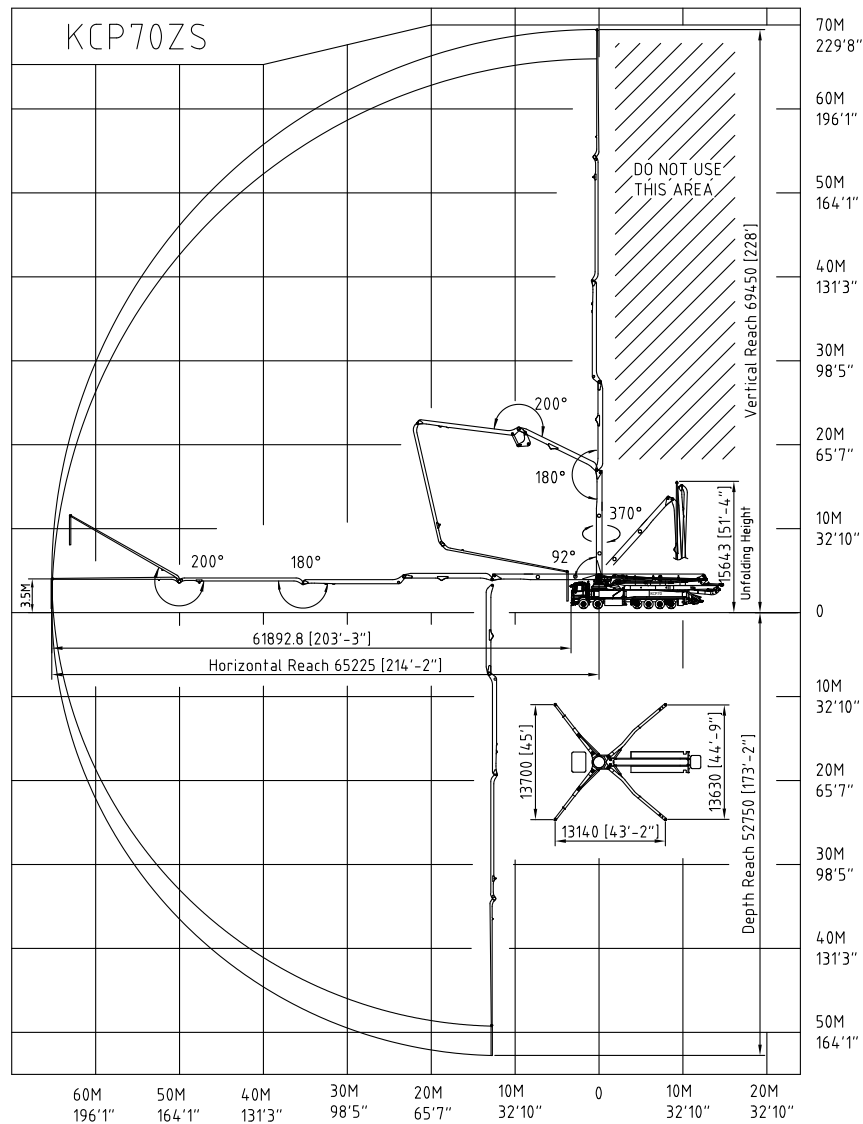
70ZS5 225 - OPTIONAL

Maximum output	225 m³/h	[294 yd³/h]
Concrete cylinder	Ø280 x 2100mm [11" x 83"]	
Stroke per minute	32	
Hydraulic pump	Rexroth A20VLO190	

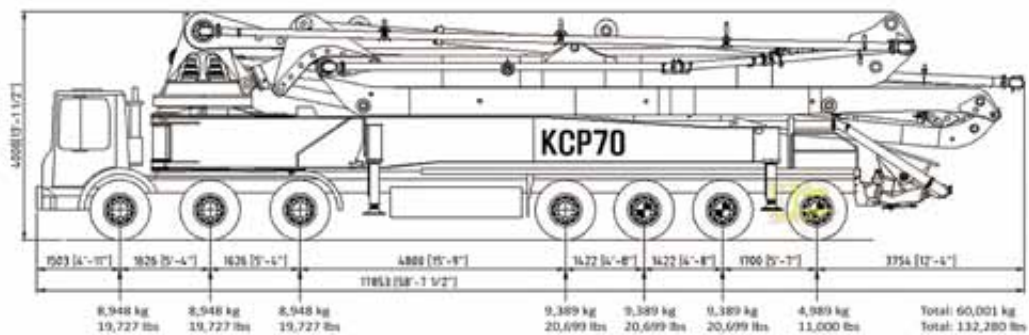
Simply the Best.

KCP70ZS5170HP

WORKING DIAGRAM



WEIGHT DIAGRAM



*Photos and drawings are for illustrative purpose only.

*Dimension will vary with different truck makers, models and specifications.

*Right to make technical amendments reserved.



KCP65ZS5170HP

BOOM SPECIFICATIONS

Vertical reach	64.7 M	[212' 3"]
Horizontal reach	60.4 M	[198' 2"]
Reach from front of truck	57 M	[187']
Unfolding height	14 M	[45' 11"]
Section articulation	92°/180°/200°/180°/210°	
Rotation	370°	
Delivery line	125mm	[5"]
Proportional boom	Yes	
End hose length	3.5 M	[11' 6"]
Outrigger spread-front	12.1M	[39' 8"]
Outrigger spread-rear	13.6 M	[44' 7.5"]
Max. outrigger weight	50,000 kg	[110,231 lbs]

TRUCK MOUNTING OPTIONS

Available: MACK, FREIGHTLINER, AUTOCAR, etc.

PUMP SPECIFICATIONS

Maximum output	170 m³/h	[222 yd³/h]
Concrete cylinder	Ø230 x 2100mm [9" x 83"]	
Stroke per minute	32	
Concrete pressure	95bar	[1377 psi]
Hopper capacity	0.6 m³	[21 ft³]
S-tube	Ø200 x Ø180mm [9" x 7"]	
Hydraulic pump	Rexroth A20VL0190	
Cycling system	Hydraulic with manual overrides	
Max aggregate size	40 mm	[1.5"]
Water tank volume	649L	171.4GAL
* Maximum theoretical values listed.		

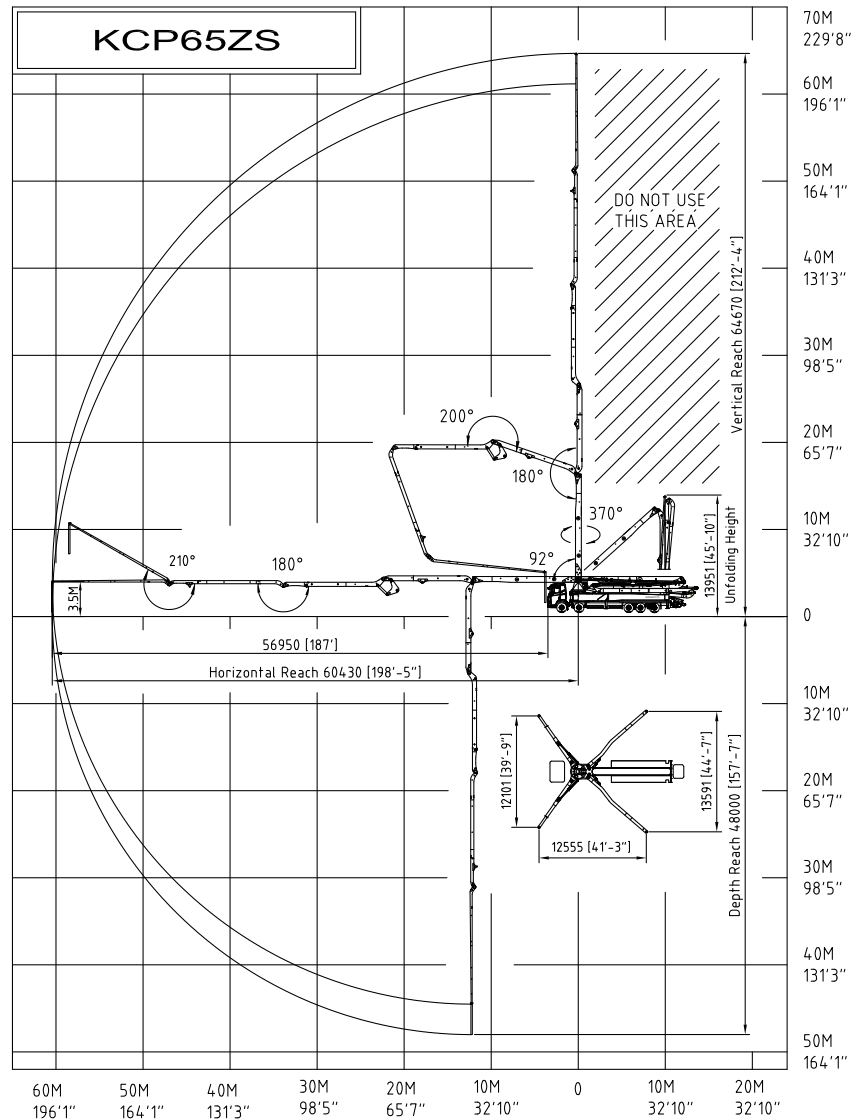
65ZS5 225 - OPTIONAL

Maximum output	225 m³/h	[294 yd³/h]
Concrete cylinder	Ø280 x 2100mm [11" x 83"]	
Stroke per minute	32	
Hydraulic pump	Rexroth A20VL0190	

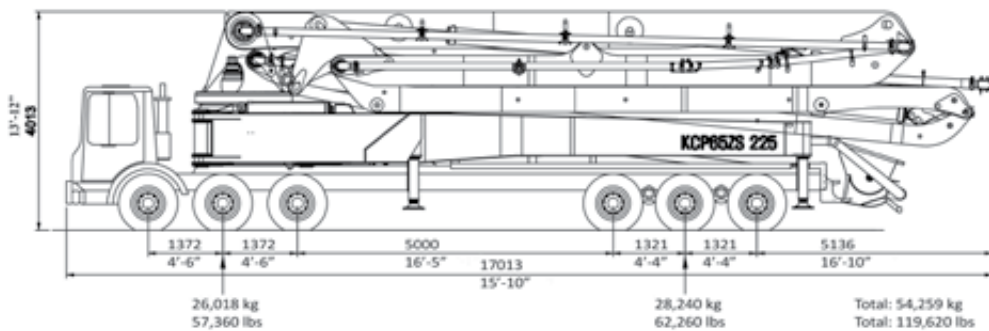
Simply the Best.

KCP65ZS5170HP

WORKING DIAGRAM



WEIGHT DIAGRAM



*Photos and drawings are for illustrative purpose only.

*Dimension will vary with different truck makers, models and specifications.

*Right to make technical amendments reserved.



KCP60ZX5170HP

BOOM SPECIFICATIONS

Vertical reach	58.5 M	[191' 11"]
Horizontal reach	54.2 M	[177' 10"]
Reach from front of truck	50.6 M	[166']
Unfolding height	13 M	[42' 8"]
Section articulation	92°/180°/210°/180°/210°	
Rotation	370°	
Delivery line	125mm	[5"]
Proportional boom	Yes	
End hose length	3.5 M	[11' 6"]
Outrigger spread-front	10.3M	[33' 9.5"]
Outrigger spread-rear	12.4 M	[40' 8"]
Max. outrigger weight	42,000 kg	[92,594 lbs]

TRUCK MOUNTING OPTIONS

Available: MACK, FREIGHTLINER, AUTOCAR, etc.

PUMP SPECIFICATIONS

Maximum output	170 m³/h	[222 yd³/h]
Concrete cylinder	Ø230 x 2100mm [9" x 83"]	
Stroke per minute	32	
Concrete pressure	95bar	[1377 psi]
Hopper capacity	0.6 m³	[21 ft³]
S-tube	Ø230 x Ø180mm [9" x 7"]	
Hydraulic pump	Rexroth A20VL0190	
Cycling system	Hydraulic with manual overrides	
Max aggregate size	40 mm	[1.5"]
Water tank volume	649L	171.4Gal
* Maximum theoretical values listed.		

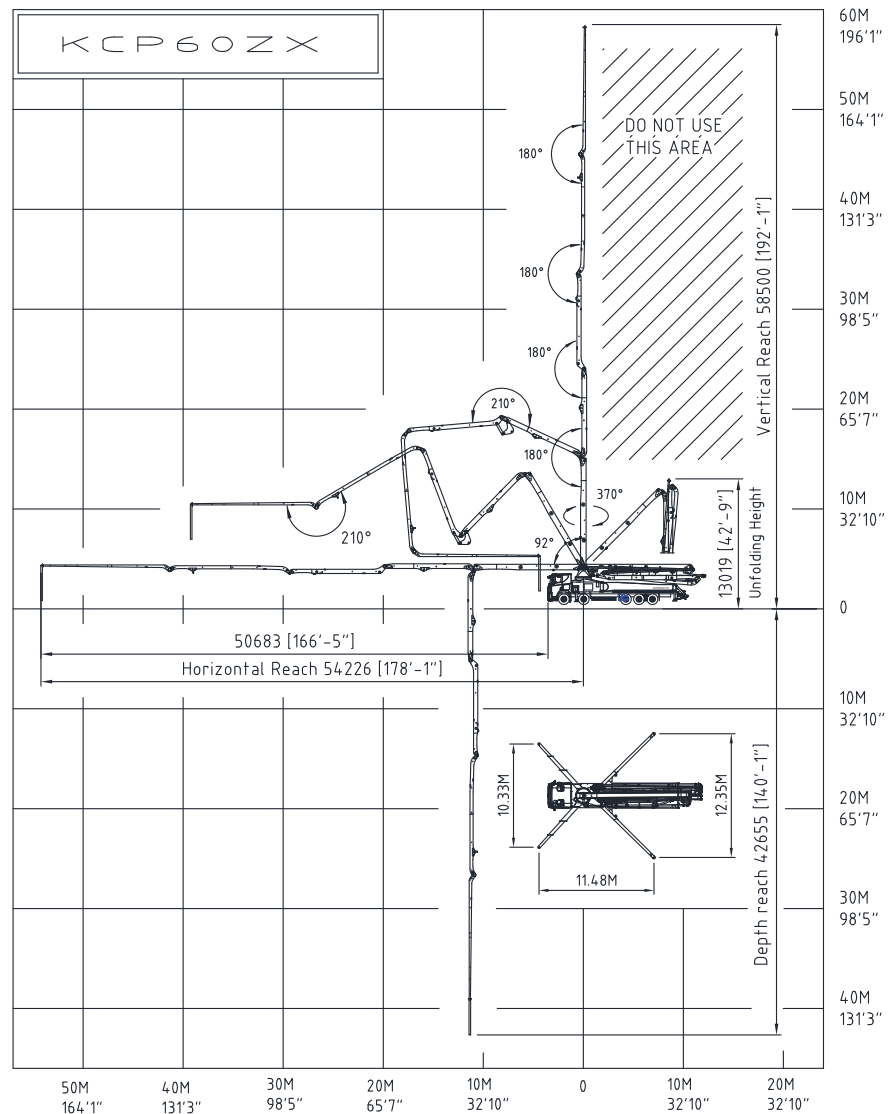
60ZX5 225 - OPTIONAL

Maximum output	225 m³/h	[294 yd³/h]
Concrete cylinder	Ø280 x 2100mm [11" x 83"]	
Stroke per minute	32	
Hydraulic pump	Rexroth A20VL0190	

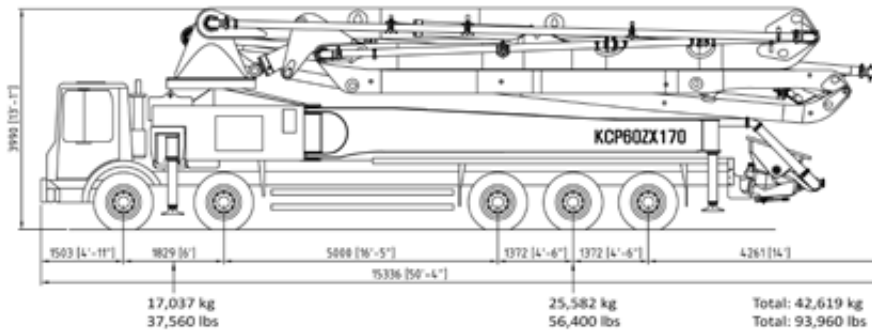
Simply the Best.

KCP60ZX5170HP

WORKING DIAGRAM



WEIGHT DIAGRAM



*Photos and drawings are for illustrative purpose only.
 *Dimension will vary with different truck makers, models and specifications.
 *Right to make technical amendments reserved.



KCP55ZX5170HP

BOOM SPECIFICATIONS

Vertical reach	54.3 M	[178' 2"]
Horizontal reach	50.2 M	[164' 8.5"]
Reach from front of truck	47 M	[154' 2.5"]
Unfolding height	11.3 M	[37' 1"]
Section articulation	92°/180°/225°/180°/210°	
Rotation	370°	
Delivery line	125mm	[5"]
Proportional boom	Yes	
End hose length	3.5 M	[11' 6"]
Outrigger spread-front	9.1M	[29' 11"]
Outrigger spread-rear	12.35 M	[40' 6"]
Max. outrigger weight	40,000 kg	[88,185 lbs]

TRUCK MOUNTING OPTIONS

Available: MACK, FREIGHTLINER, AUTOCAR, etc.

PUMP SPECIFICATIONS

Maximum output	170 m³/h	[222 yd³/h]
Concrete cylinder	Ø230 x 2100mm [9" x 83"]	
Stroke per minute	32	
Concrete pressure	95bar	[1377 psi]
Hopper capacity	0.6 m³	[21 ft³]
S-tube	Ø230 x Ø180mm [9" x 7"]	
Hydraulic pump	Rexroth A20VLO190 [Kawasaki K3V180DT]	
Cycling system	Hydraulic with manual overrides	
Max aggregate size	40 mm	[1.5"]
Water tank volume	649l	171.4Gal
* Maximum theoretical values listed.		

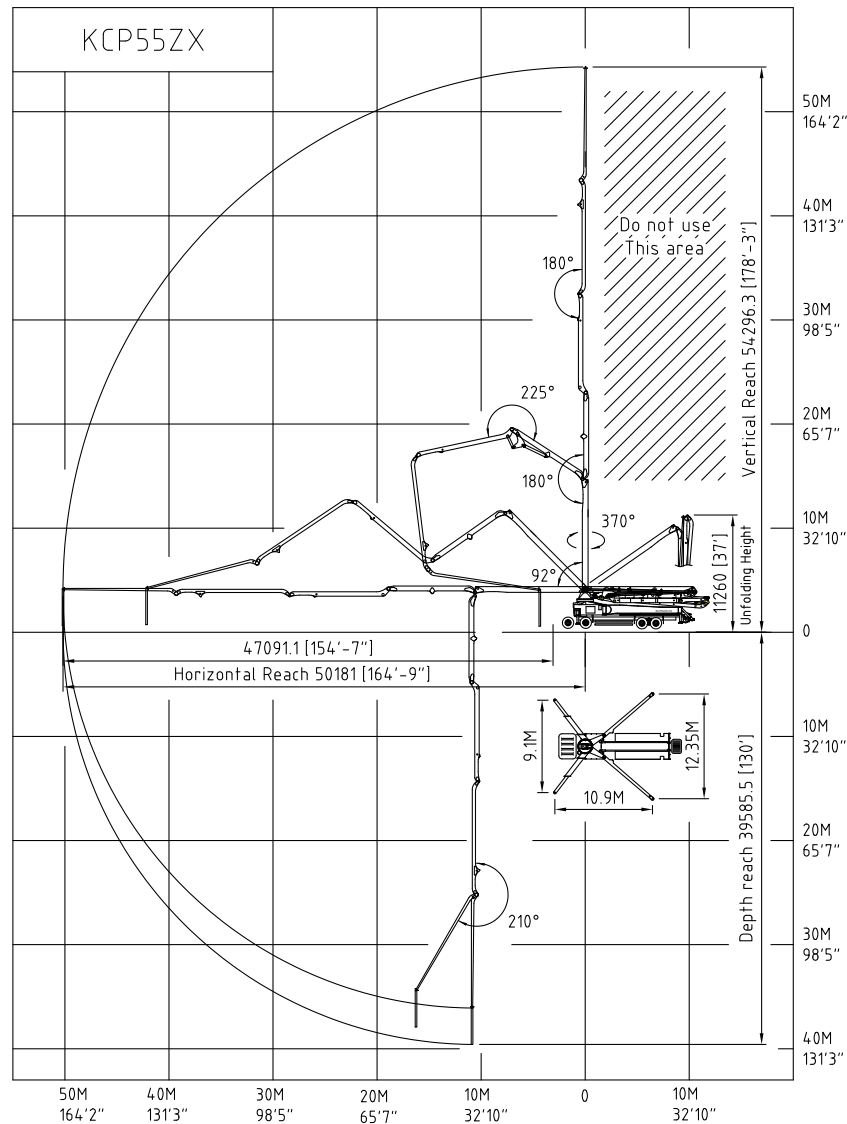
55ZX5 225 - OPTIONAL

Maximum output	225 m³/h	[294 yd³/h]
Concrete cylinder	Ø280 x 2100mm [11" x 83"]	
Stroke per minute	32	
Hydraulic pump	Rexroth A20VLO190	

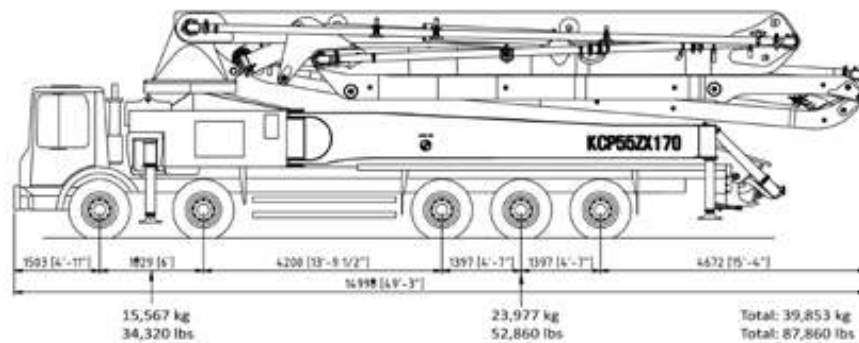
Simply the Best.

KCP55ZX5170HP

WORKING DIAGRAM



WEIGHT DIAGRAM



*Photos and drawings are for illustrative purpose only.

*Dimension will vary with different truck makers, models and specifications.

*Right to make technical amendments reserved.



KCP52ZX5170HP

BOOM SPECIFICATIONS

Vertical reach	51.6 M	[169' 3.5"]
Horizontal reach	47.5 M	[155' 10.5"]
Reach from front of truck	44.6 M	[146' 4"]
Unfolding height	11 M	[36' 1"]
Section articulation	92°/180°/225°/180°/210°	
Rotation	370°	
Delivery line	125mm	[5"]
Proportional boom	Yes	
End hose length	3.5 M	[11' 6"]
Outrigger spread-front	9.1M	[29' 10"]
Outrigger spread-rear	10.6 M	[34' 9"]
Max. outrigger weight	38,000 kg	[83,776 lbs]

TRUCK MOUNTING OPTIONS

Available: MACK, FREIGHTLINER, AUTOCAR, etc.

PUMP SPECIFICATIONS

Maximum output	170 m³/h	[222 yd³/h]
Concrete cylinder	Ø230 x 2100mm [9" x 83"]	
Stroke per minute	32	
Concrete pressure	95bar	[1377 psi]
Hopper capacity	0.6 m³	[21 ft³]
S-tube	Ø200 x Ø180mm [9" x 7"]	
Hydraulic pump	Rexroth A20VLO190 [Kawasaki K3V180DT]	
Cycling system	Hydraulic with manual overrides	
Max aggregate size	40 mm	[1.5"]
Water tank volume	717L	189.3Gal
* Maximum theoretical values listed.		

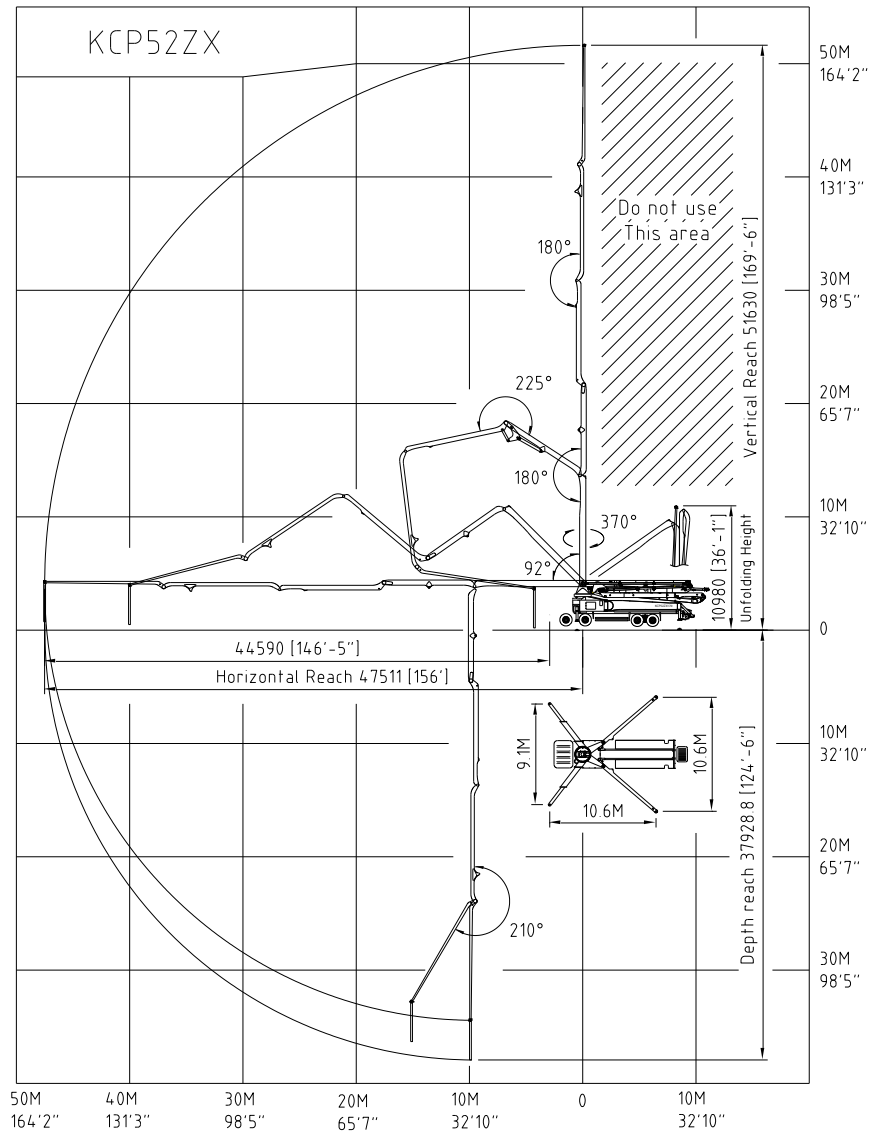
52ZX5 225 - OPTIONAL

Maximum output	225 m³/h	[294 yd³/h]
Concrete cylinder	Ø280 x 2100mm [11" x 83"]	
Stroke per minute	32	
Hydraulic pump	Rexroth A20VLO190	

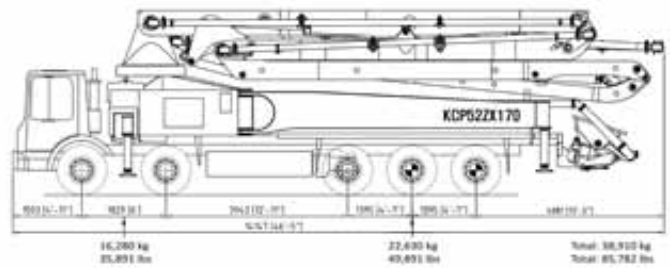
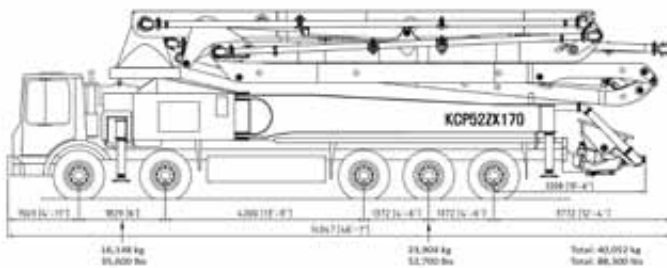
Simply the Best.

KCP52ZX5170HP

WORKING DIAGRAM



WEIGHT DIAGRAM



*Photos and drawings are for illustrative purpose only.

*Dimension will vary with different truck makers, models and specifications.

*Right to make technical amendments reserved.



KCP46ZX5170HP

BOOM SPECIFICATIONS

Vertical reach	45 M	[147' 8"]
Horizontal reach	40.9 M	[134' 2"]
Reach from front of truck	38.6 M	[126' 8"]
Unfolding height	8.9 M	[29' 2"]
Section articulation	92°/180°/225°/180°/210°	
Rotation	370°	
Delivery line	125mm	[5"]
Proportional boom	Yes	
End hose length	3.5 M	[11' 6"]
Outrigger spread-front	8.8M	[28' 10.5"]
Outrigger spread-rear	9.5 M	[31' 2"]
Max. outrigger weight	29,000 kg	[63,934 lbs]

TRUCK MOUNTING OPTIONS

Available: MACK, FREIGHTLINER, AUTOCAR, etc.

PUMP SPECIFICATIONS

Maximum output	170 m³/h	[222 yd³/h]
Concrete cylinder	Ø230 x 2100mm [9" x 83"]	
Stroke per minute	32	
Concrete pressure	95bar	[1377 psi]
Hopper capacity	0.6 m³	[21 ft³]
S-tube	Ø230 x Ø180mm [9" x 7"]	
Hydraulic pump	Rexroth A20VLO190 [Kawasaki K3V180DT]	
Cycling system	Hydraulic with manual overrides	
Max aggregate size	40 mm	[1.5"]
Water tank volume	600L	158.5Gal

* Maximum theoretical values listed.

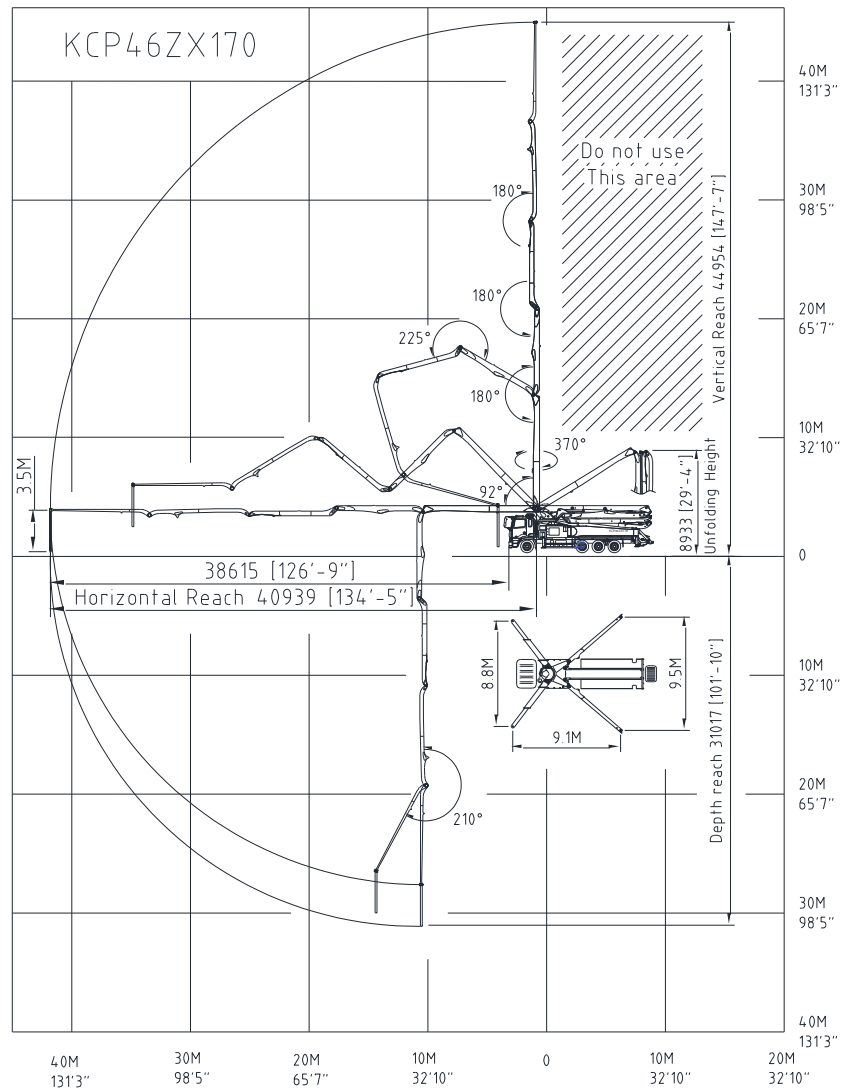
46ZX5 225 - OPTIONAL

Maximum output	225 m³/h	[294 yd³/h]
Concrete cylinder	Ø280 x 2100mm [11" x 83"]	
Stroke per minute	32	
Hydraulic pump	Rexroth A20VLO190	

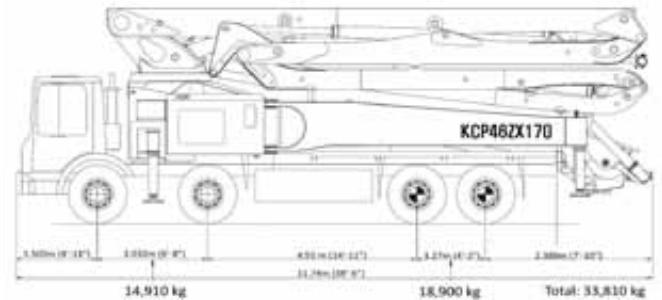
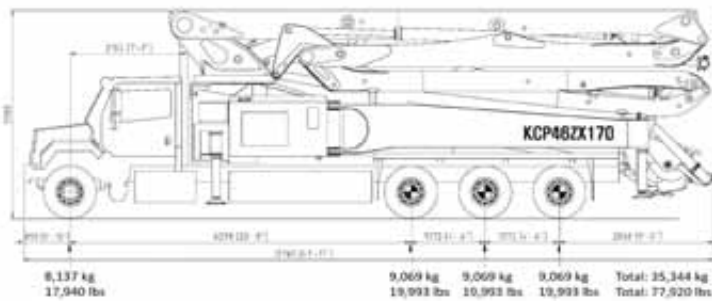
Simply the Best.

KCP46ZX5170HP

WORKING DIAGRAM



WEIGHT DIAGRAM



*Photos and drawings are for illustrative purpose only.

*Dimension will vary with different truck makers, models and specifications.

*Right to make technical amendments reserved.



KCP40ZX5170

BOOM SPECIFICATIONS

Vertical reach	39.6 M	[129' 11"]
Horizontal reach	35.6 M	[116' 10"]
Reach from front of truck	32.5 M	[106' 8"]
Unfolding height	7.91 M	[25' 11"]
Section articulation	92°/186°/240°/180°/245°	
Rotation	370°	
Delivery line	125mm	[5"]
Proportional boom	Yes	
End hose length	3.5 M	[11' 6"]
Outrigger spread-front	8.1 M	[20' 3"]
Outrigger spread-rear	8.1 M	[26' 7"]
Max. outrigger weight	25,000 kg	[55116 lbs]

TRUCK MOUNTING OPTIONS

Available: MACK, FREIGHTLINER, AUTOCAR, etc.

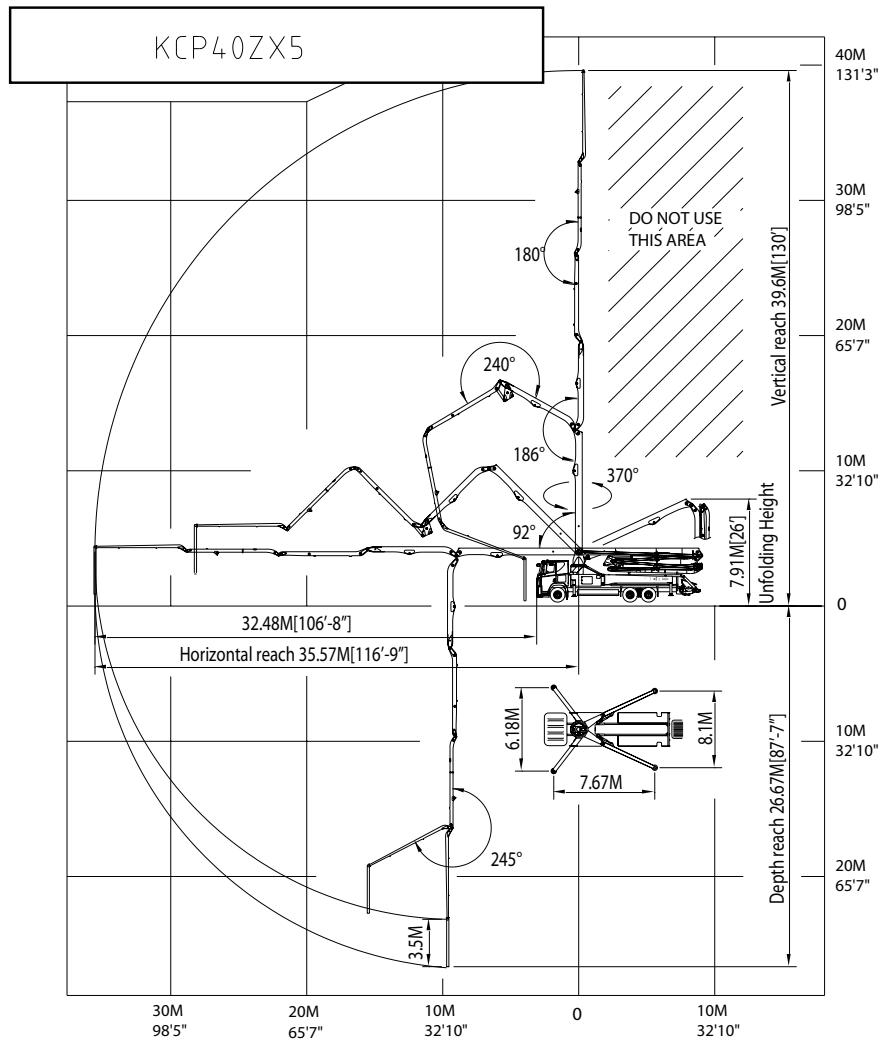
PUMP SPECIFICATIONS

Maximum output	170 m³/h	[222 yd³/h]
Concrete cylinder	Ø230 x 2100mm [9" x 83"]	
Stroke per minute	32	
Concrete pressure	70 bar	[1015 psi]
Hopper capacity	0.6 m³	[21 ft³]
S-tube	Ø230 x Ø180mm [9" x 7"]	
Hydraulic pump	Rexroth A20VL0190	
Cycling system	Hydraulic with manual overrides	
Max aggregate size	40 mm	[1.5"]
Water tank volume	554L	146.4 Gal
* Maximum theoretical values listed.		

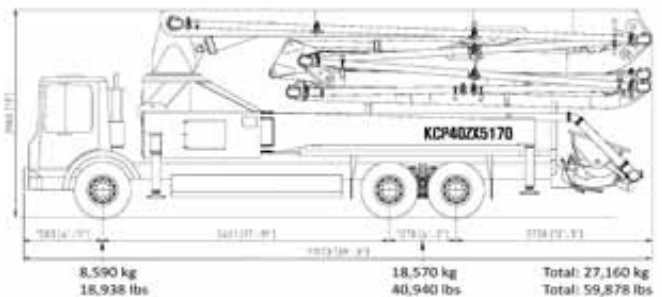
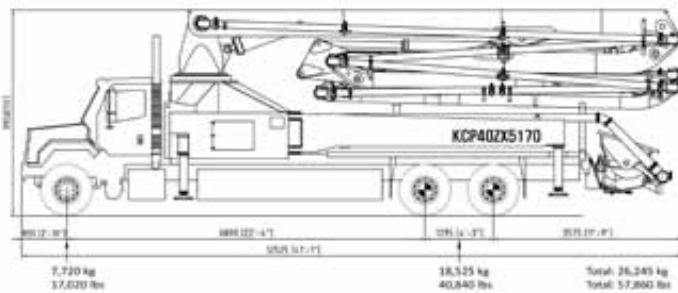
Simply the Best.

KCP40ZX5170

WORKING DIAGRAM



WEIGHT DIAGRAM



*Photos and drawings are for illustrative purpose only.

*Dimension will vary with different truck makers, models and specifications.

*Right to make technical amendments reserved.



KCP40RX170

BOOM SPECIFICATIONS

Vertical reach	39.7 M	[130' 3"]
Horizontal reach	35.7 M	[117' 2"]
Reach from front of truck	32.6 M	[107']
Unfolding height	9.3 M	[30' 6"]
Section articulation	92°/187°/240°/245°	
Rotation	370°	
Delivery line	125mm	[5"]
Proportional boom	Yes	
End hose length	3.5 M	[11' 6"]
Outrigger spread-front	6.18 M	[20' 3"]
Outrigger spread-rear	8.1 M	[26' 7"]
Max. outrigger weight	24,500 kg	[54013 lbs]

TRUCK MOUNTING OPTIONS

Available: MACK, FREIGHTLINER, AUTOCAR, etc.

PUMP SPECIFICATIONS

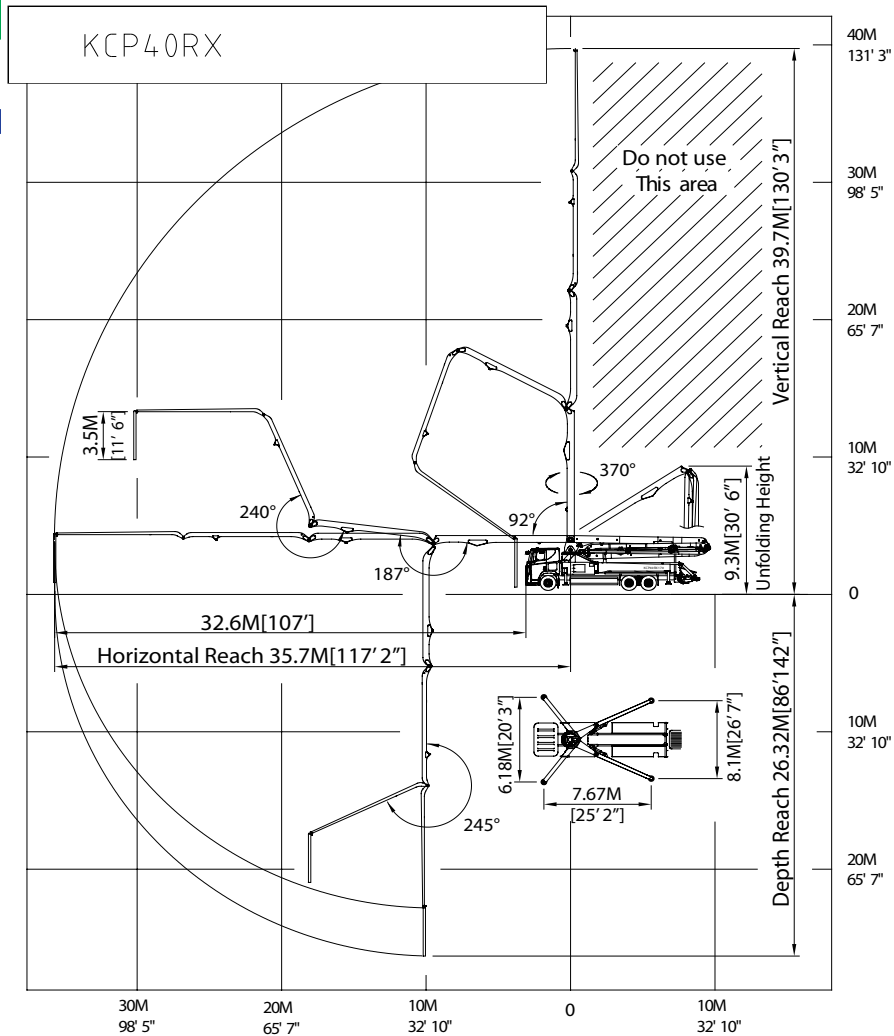
Maximum output	170 m³/h	[222 yd³/h]
Concrete cylinder	Ø230 x 2100mm [9" x 83"]	
Stroke per minute	32	
Concrete pressure	70 bar	[1015 psi]
Hopper capacity	0.6 m³	[21 ft³]
S-tube	Ø230 x Ø180mm [9" x 7"]	
Hydraulic pump	Rexroth A20VL0190	
Cycling system	Hydraulic with manual overrides	
Max aggregate size	40 mm	[1.5"]
Water tank volume	600 L	158.4 Gal

* Maximum theoretical values listed.

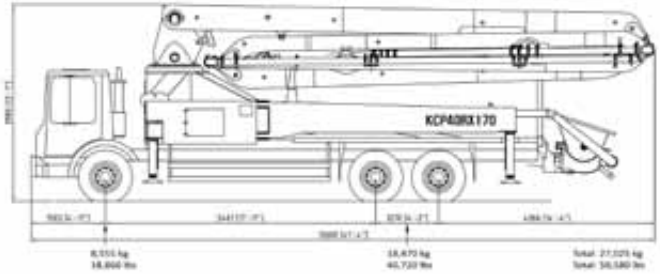
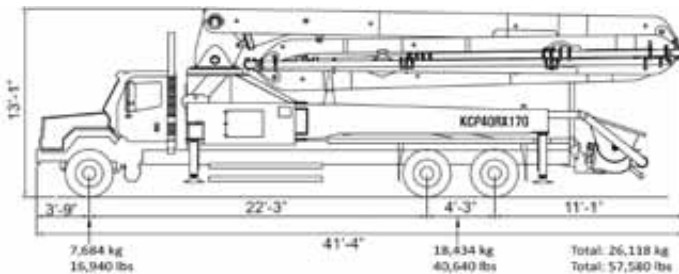
Simply the Best.

KCP40RX170

WORKING DIAGRAM



WEIGHT DIAGRAM



*Photos and drawings are for illustrative purpose only.
 *Dimension will vary with different truck makers, models and specifications.
 *Right to make technical amendments reserved.



KCP38ZX170

BOOM SPECIFICATIONS

Vertical reach	37.3 M	[122' 4.5"]
Horizontal reach	33.2 M	[108' 11"]
Reach from front of truck	30.1 M	[98' 9"]
Unfolding height	9.1 M	[29' 10"]
Section articulation	92°/180°/250°/245°	
Rotation	370°	
Delivery line	125mm	[5"]
Proportional boom	Yes	
End hose length	3.5 M	[11' 6"]
Outrigger spread-front	6.2M	[20' 4"]
Outrigger spread-rear	7.2 M	[23' 7.5"]
Max. outrigger weight	23,500 kg	[51,809lbs]

TRUCK MOUNTING OPTIONS

Available: MACK, FREIGHTLINER, AUTOCAR, etc.

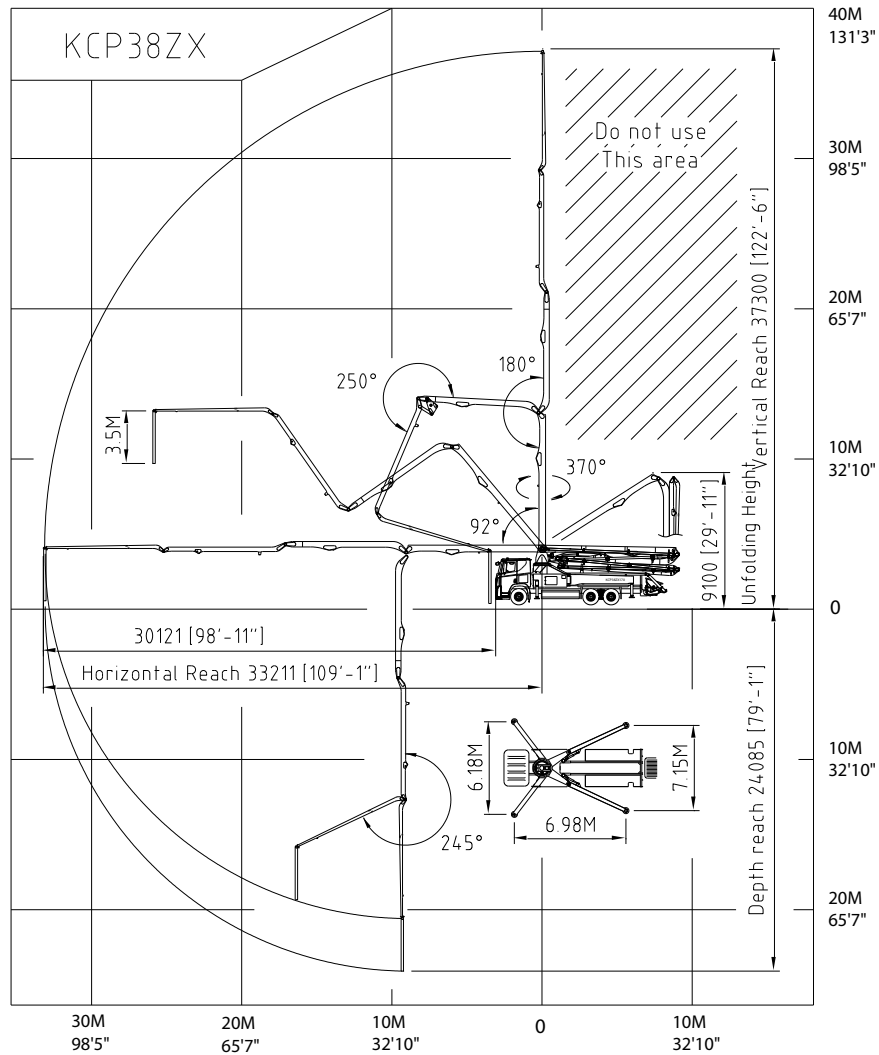
PUMP SPECIFICATIONS

Maximum output	170 m³/h	[222 yd³/h]
Concrete cylinder	Ø230 x 2100mm [9" x 83"]	
Stroke per minute	32	
Concrete pressure	70 bar	[1015 psi]
Hopper capacity	0.6 m³	[21 ft³]
S-tube	Ø230 x Ø180mm [9" x 7"]	
Hydraulic pump	Rexroth A20VL0190	
Cycling system	Hydraulic with manual overrides	
Max aggregate size	40 mm	[1.5"]
Water tank volume	454 L	120 Gal
* Maximum theoretical values listed.		

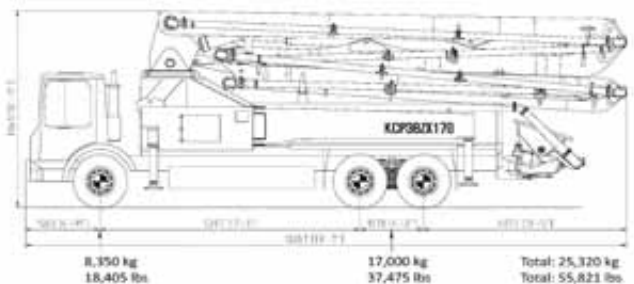
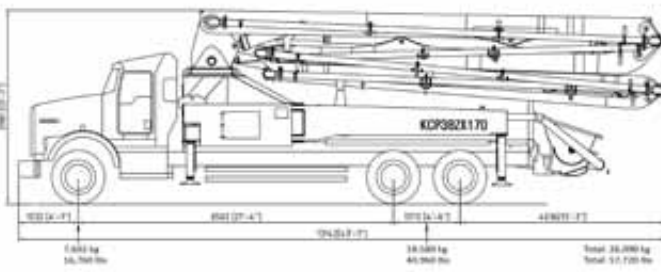
Simply the Best.

KCP38ZX170

WORKING DIAGRAM



WEIGHT DIAGRAM



*Photos and drawings are for illustrative purpose only.
 *Dimension will vary with different truck makers, models and specifications.
 *Right to make technical amendments reserved.



KCP37ZX5170

BOOM SPECIFICATIONS

Vertical reach	36.3 M	[119' 1"]
Horizontal reach	32.1 M	[105' 4"]
Reach from front of truck	28.9 M	[94' 10"]
Unfolding height	7.3 M	[23' 11.5"]
Section articulation	92°/180°/225°/180°/245°	
Rotation	370°	
Delivery line	125mm	[5"]
Proportional boom	Yes	
End hose length	3 M	[9' 10"]
Outrigger spread-front	5.6M	[18' 4.5"]
Outrigger spread-rear	6.7 M	[21' 12"]
Max. outrigger weight	17,500 kg	[38581 lbs]

TRUCK MOUNTING OPTIONS

Available: MACK, FREIGHTLINER, AUTOCAR, etc.

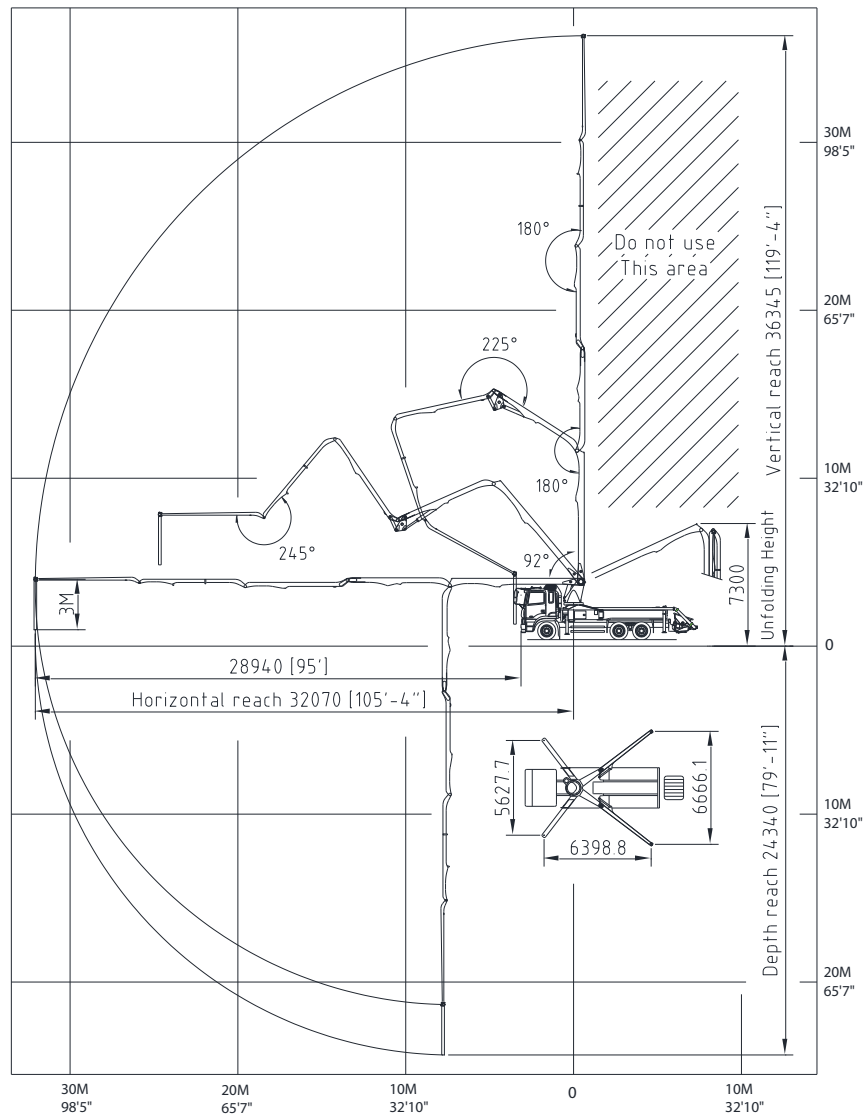
PUMP SPECIFICATIONS

Maximum output	170 m³/h	[222 yd³/h]
Concrete cylinder	Ø230 x 1800mm [9" x 71"]	
Stroke per minute	32	
Concrete pressure	70 bar	[1015 psi]
Hopper capacity	0.6 m³	[21 ft³]
S-tube	Ø230 x Ø180mm [9" x 7"]	
Hydraulic pump	Rexroth A20VL0190	
Cycling system	Hydraulic with manual overrides	
Max aggregate size	40 mm	[1.5"]
Water tank volume	450L	118.9 Gal
* Maximum theoretical values listed.		

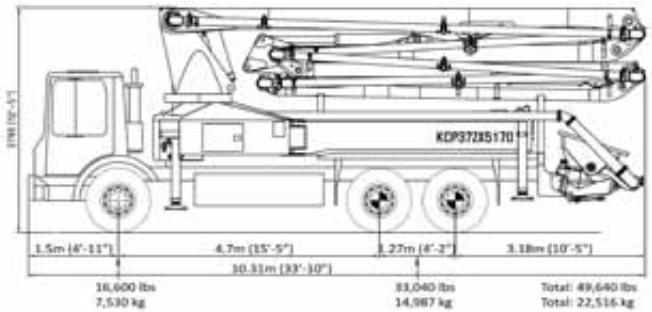
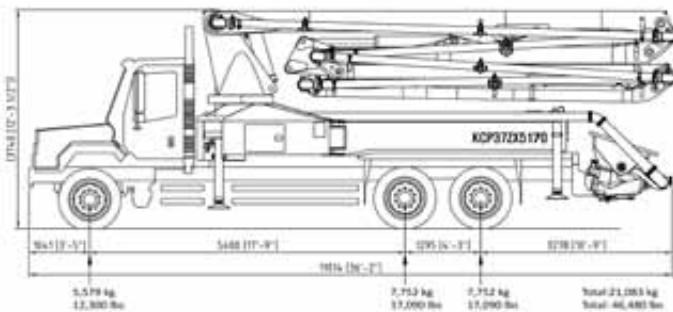
Simply the Best.

KCP37ZX5170

WORKING DIAGRAM



WEIGHT DIAGRAM



*Photos and drawings are for illustrative purpose only.
 *Dimension will vary with different truck makers, models and specifications.
 *Right to make technical amendments reserved.



KCP34ZX5170

BOOM SPECIFICATIONS

Vertical reach	34.7 M	[113' 10"]
Horizontal reach	30.5 M	[100' 1"]
Reach from front of truck	27.4 M	[89' 10.5"]
Unfolding height	6.8 M	[22' 3.5"]
Section articulation	92°/180°/225°/180°/245°	
Rotation	370°	
Delivery line	125mm	[5"]
Proportional boom	Yes	
End hose length	3 M	[3' 10"]
Outrigger spread-front	5.6 M	[18' 4.5"]
Outrigger spread-rear	6.7 M	[21' 12"]
Max. outrigger weight	16,000 kg	[35,274 lbs]

TRUCK MOUNTING OPTIONS

Available: MACK, FREIGHTLINER, AUTOCAR, etc.

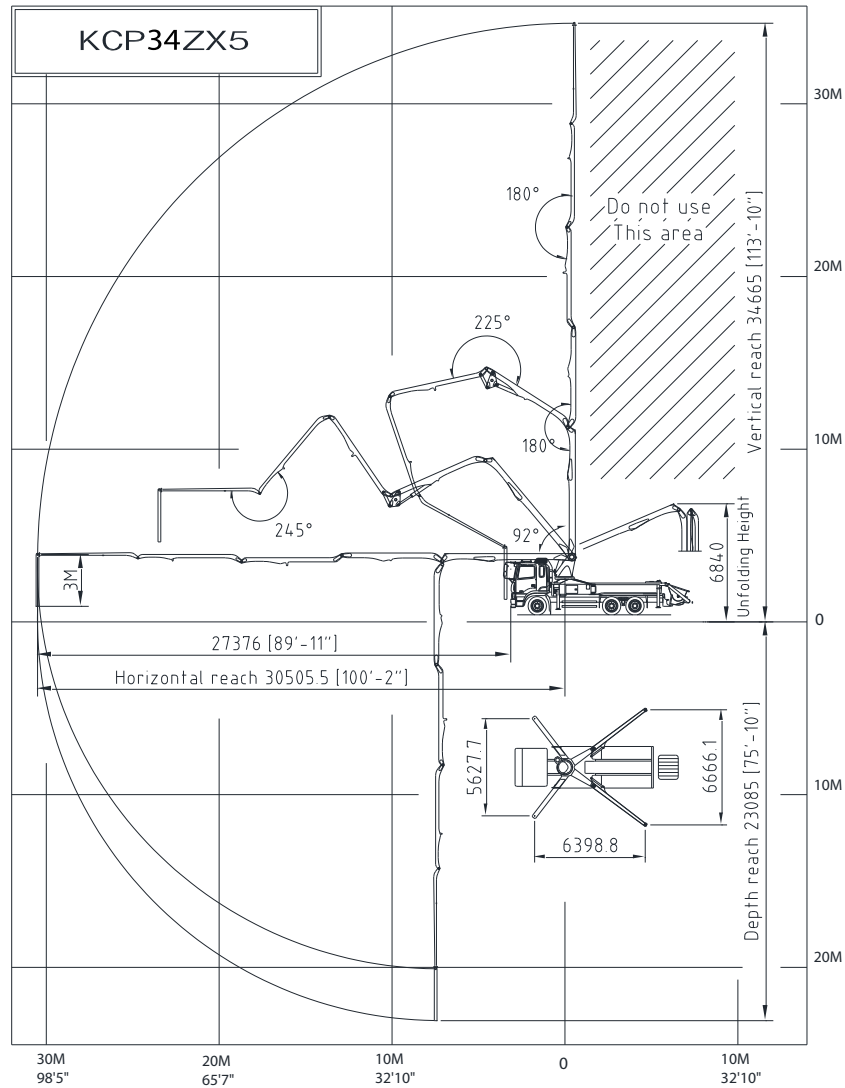
PUMP SPECIFICATIONS

Maximum output	170 m³/h	[222 yd³/h]
Concrete cylinder	Ø230 x 1800mm [9" x 7"]	
Stroke per minute	32	
Concrete pressure	70 bar	[1015 psi]
Hopper capacity	0.6 m³	[21 ft³]
S-tube	Ø230 x Ø180mm [9" x 7"]	
Hydraulic pump	Rexroth A20VL0190	
Cycling system	Hydraulic with manual overrides	
Max aggregate size	40 mm	[1.5"]
Water tank volume	450L	118.9 Gal
* Maximum theoretical values listed.		

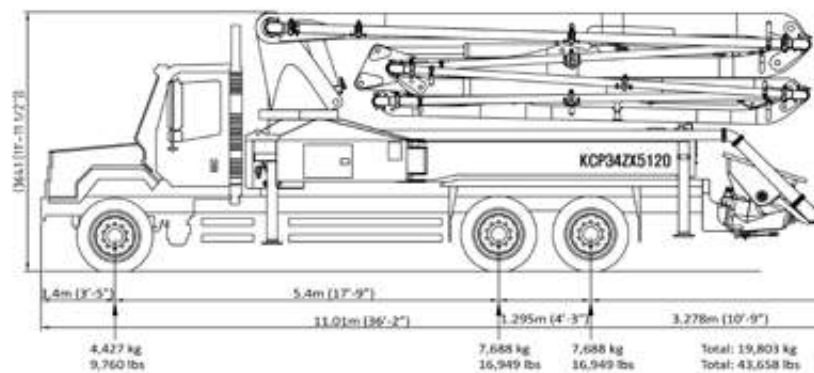
Simply the Best.

KCP34ZX5170

WORKING DIAGRAM



WEIGHT DIAGRAM



*Photos and drawings are for illustrative purpose only.
 *Dimension will vary with different truck makers, models and specifications.
 *Right to make technical amendments reserved.



KCP32RZX5170

BOOM SPECIFICATIONS

Vertical reach	31.9 M	[104' 9"]
Horizontal reach	27.7 M	[91']
Reach from front of truck	25.4 M	[83' 4"]
Unfolding height	5.8 M	[19' 1"]
Section articulation	90°/180°/240°/220°/220°	
Rotation	370°	
Delivery line	125mm	[5"]
Proportional boom	Yes	
End hose length	3.5 M	[11' 6"]
Outrigger spread-front	6.18 M	[20' 3"]
Outrigger spread-rear	7.15M	[23' 6"]
Max. outrigger weight	20,500 kg	[42,195 lbs]

TRUCK MOUNTING OPTIONS

Available: MACK, FREIGHTLINER, AUTOCAR, etc.

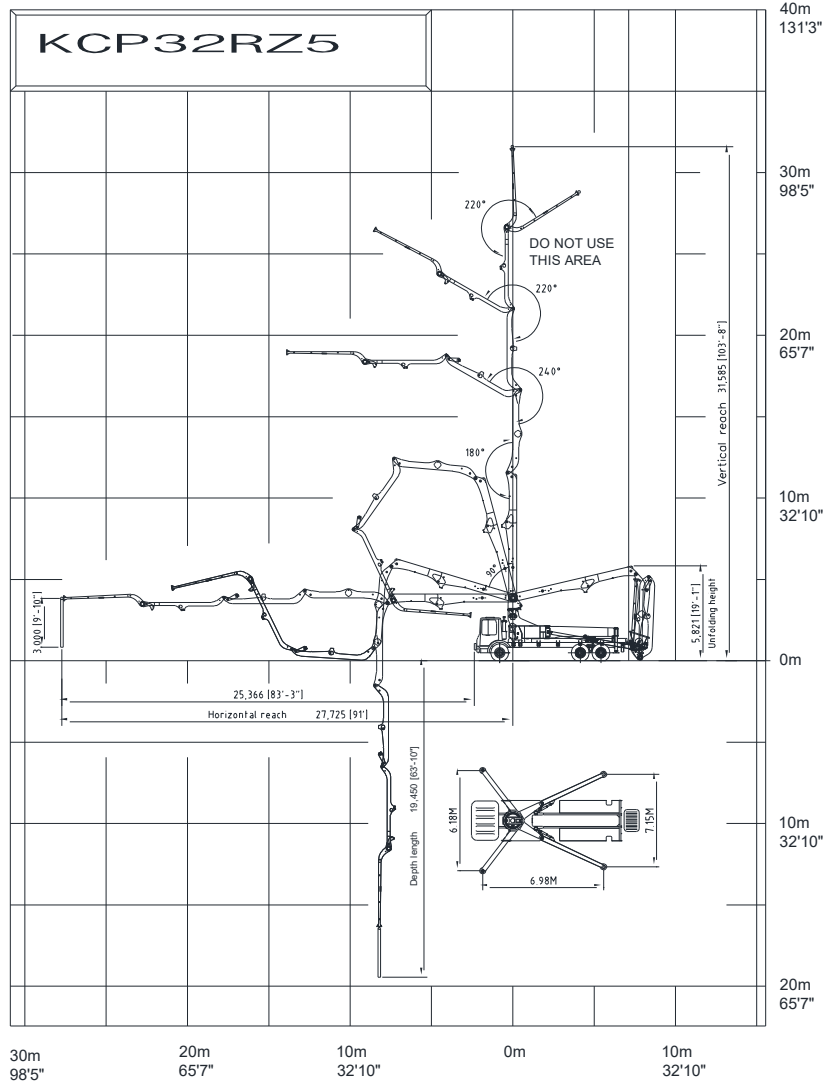
PUMP SPECIFICATIONS

Maximum output	170 m³/h	[222 yd³/h]
Concrete cylinder	Ø230 x 2100mm [9" x 83"]	
Stroke per minute	32	
Concrete pressure	70 bar	[1015 psi]
Hopper capacity	0.6 m³	[21 ft³]
S-tube	Ø230 x Ø180mm [9" x 7"]	
Hydraulic pump	Rexroth A20VL0190	
Cycling system	Hydraulic with manual overrides	
Max aggregate size	40 mm	[1 1/2"]
Water tank volume	454L	120Gal
* Maximum theoretical values listed.		

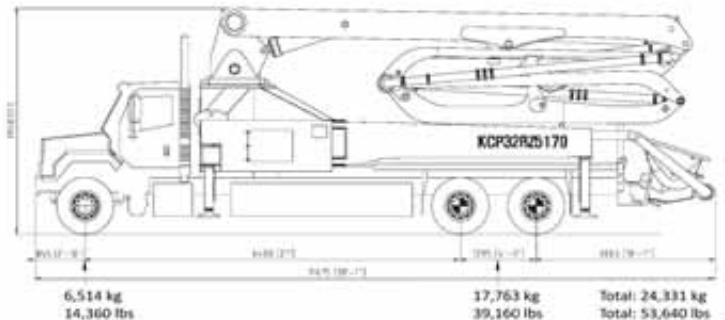
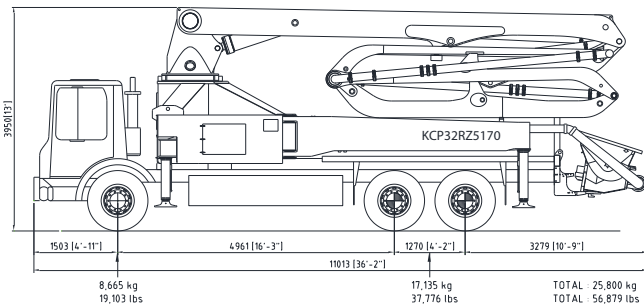
Simply the Best.

KCP32RZX5170

WORKING DIAGRAM



WEIGHT DIAGRAM



*Photos and drawings are for illustrative purpose only.
 *Dimension will vary with different truck makers, models and specifications.
 *Right to make technical amendments reserved.



KCP32ZX170

BOOM SPECIFICATIONS

Vertical reach	31.6 M	[103' 8"]
Horizontal reach	27.6 M	[90' 6 1/2"]
Reach from front of truck	24.5 M	[80' 4 1/2"]
Unfolding height	7.34 M	[24' 1"]
Section articulation	92°/180°/250°/245°	
Rotation	370°	
Delivery line	125mm	[5"]
Proportional boom	Yes	
End hose length	3.5 M	[11' 6"]
Outrigger spread-front	6.18 M	[20' 3"]
Outrigger spread-rear	7.15M	[23' 5 1/2"]
Max. outrigger weight	19,500 kg	[42,990 lbs]

TRUCK MOUNTING OPTIONS

Available: MACK, FREIGHTLINER, AUTOCAR, etc.

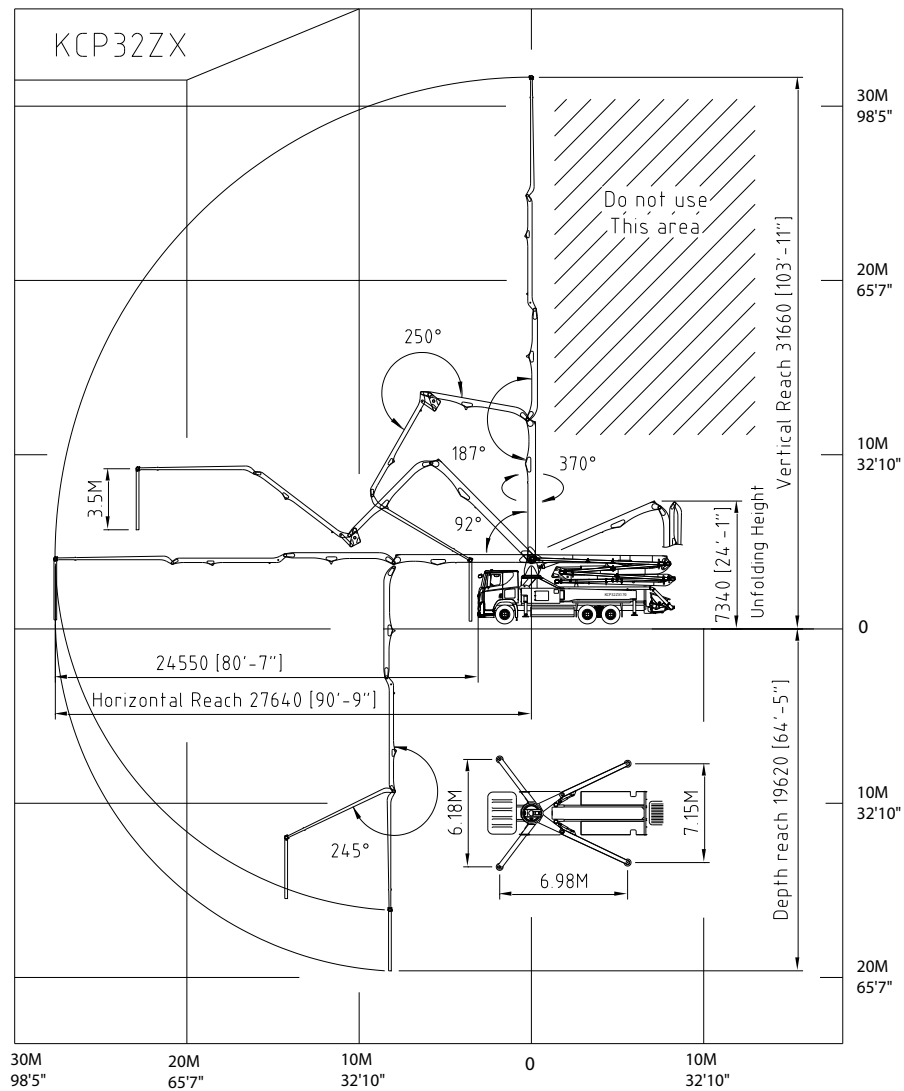
PUMP SPECIFICATIONS

Maximum output	170 m³/h	[222 yd³/h]
Concrete cylinder	Ø230 x 2100mm [9" x 83"]	
Stroke per minute	32	
Concrete pressure	70 bar	[1015 psi]
Hopper capacity	0.6 m³	[21 ft³]
S-tube	Ø230 x Ø180mm [9" x 7"]	
Hydraulic pump	Rexroth A20VL0190	
Cycling system	Hydraulic with manual overrides	
Max aggregate size	40 mm	[1 1/2"]
Water tank volume	454L	120Gal
* Maximum theoretical values listed.		

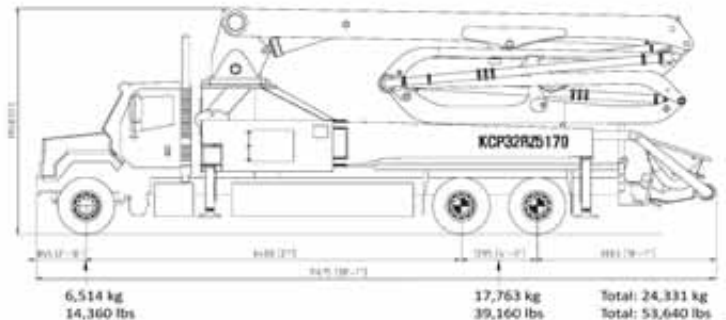
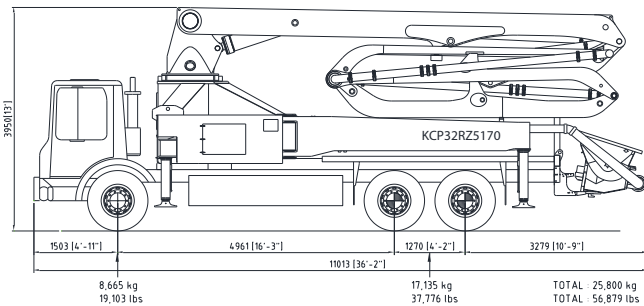
Simply the Best.

KCP32RZX5170

WORKING DIAGRAM



WEIGHT DIAGRAM



*Photos and drawings are for illustrative purpose only.

*Dimension will vary with different truck makers, models and specifications.

*Right to make technical amendments reserved.



KCP31ZX5120

BOOM SPECIFICATIONS

Vertical reach	30.6 M	[100' 5"]
Horizontal reach	26.5 M	[86' 11"]
Reach from front of truck	23.4 M	[76' 9"]
Unfolding height	6 M	[19' 8"]
Section articulation	92°/180°/230°/180°/235°	
Rotation	370°	
Delivery line	125mm	[5"]
Proportional boom	Yes	
End hose length	3 M	[9' 10"]
Outrigger spread-front	5.6 M	[18' 4.5"]
Outrigger spread-rear	6.1 M	[20']
Max. outrigger weight	14,000 kg	[30,865 lbs]

TRUCK MOUNTING OPTIONS

Available: MACK, FREIGHTLINER, AUTOCAR, etc.

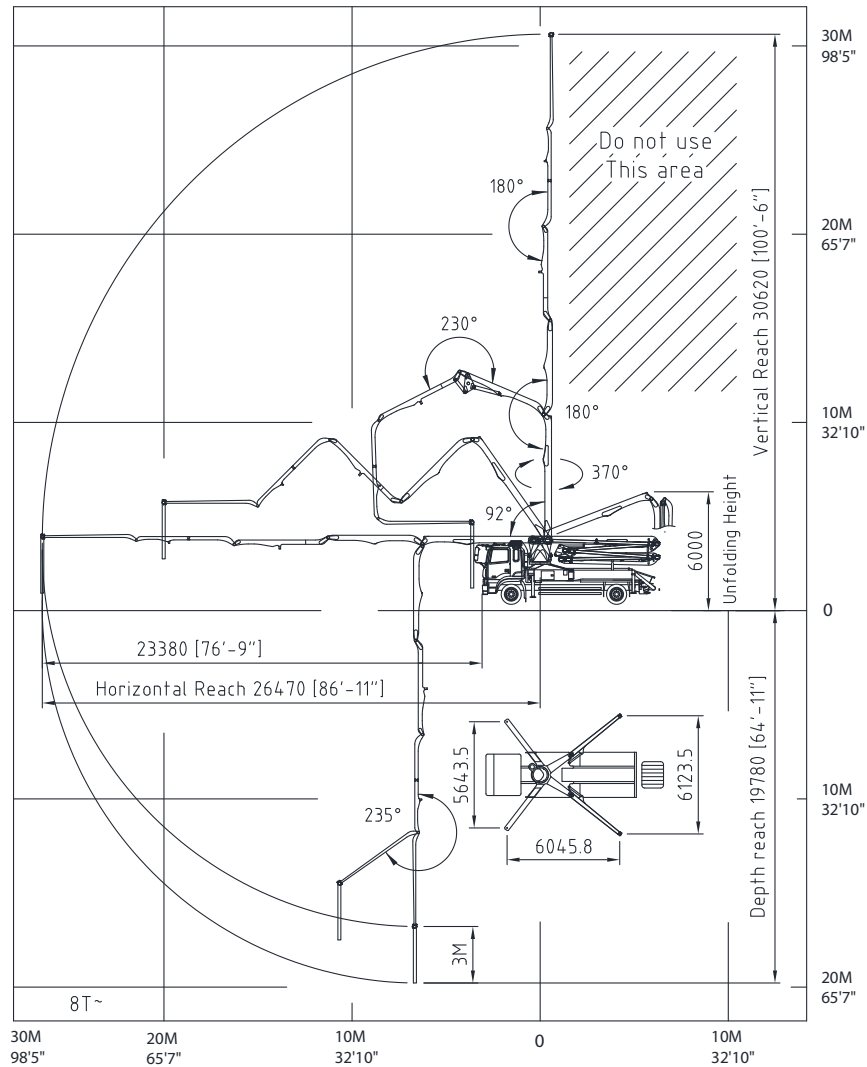
PUMP SPECIFICATIONS

Maximum output	120 m³/h	[157 yd³/h]
Concrete cylinder	Ø230 x 1800mm [9" x 71"]	
Stroke per minute	32	
Concrete pressure	70 bar	[1015 psi]
Hopper capacity	0.6 m³	[21 ft³]
S-tube	Ø230 x Ø180mm [9" x 7"]	
Hydraulic pump	Rexroth A20VL0190	
Cycling system	Hydraulic with manual overrides	
Max aggregate size	40 mm	[1.5"]
Water tank volume	450L	118.9Gal
* Maximum theoretical values listed.		

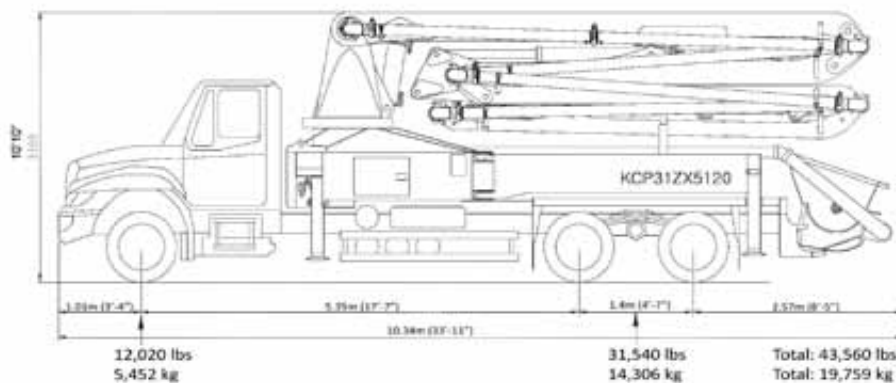
Simply the Best.

KCP31ZX5120

WORKING DIAGRAM



WEIGHT DIAGRAM



*Photos and drawings are for illustrative purpose only.
 *Dimension will vary with different truck makers, models and specifications.
 *Right to make technical amendments reserved.



KCP28ZX120

BOOM SPECIFICATIONS

Vertical reach	27.1 M	[88' 11"]
Horizontal reach	23.2 M	[76' 1"]
Reach from front of truck	20.3 M	[66' 7"]
Unfolding height	6.6 M	[21' 7"]
Section articulation	92°/180°/250°/245°	
Rotation	370°	
Delivery line	125mm	[5"]
Proportional boom	Yes	
End hose length	3 M	[10']
Outrigger spread-front	5.64M	[18' 6"]
Outrigger spread-rear	5.88 M	[19' 4"]
Max. outrigger weight	13,000 kg	[28660 lbs]

TRUCK MOUNTING OPTIONS

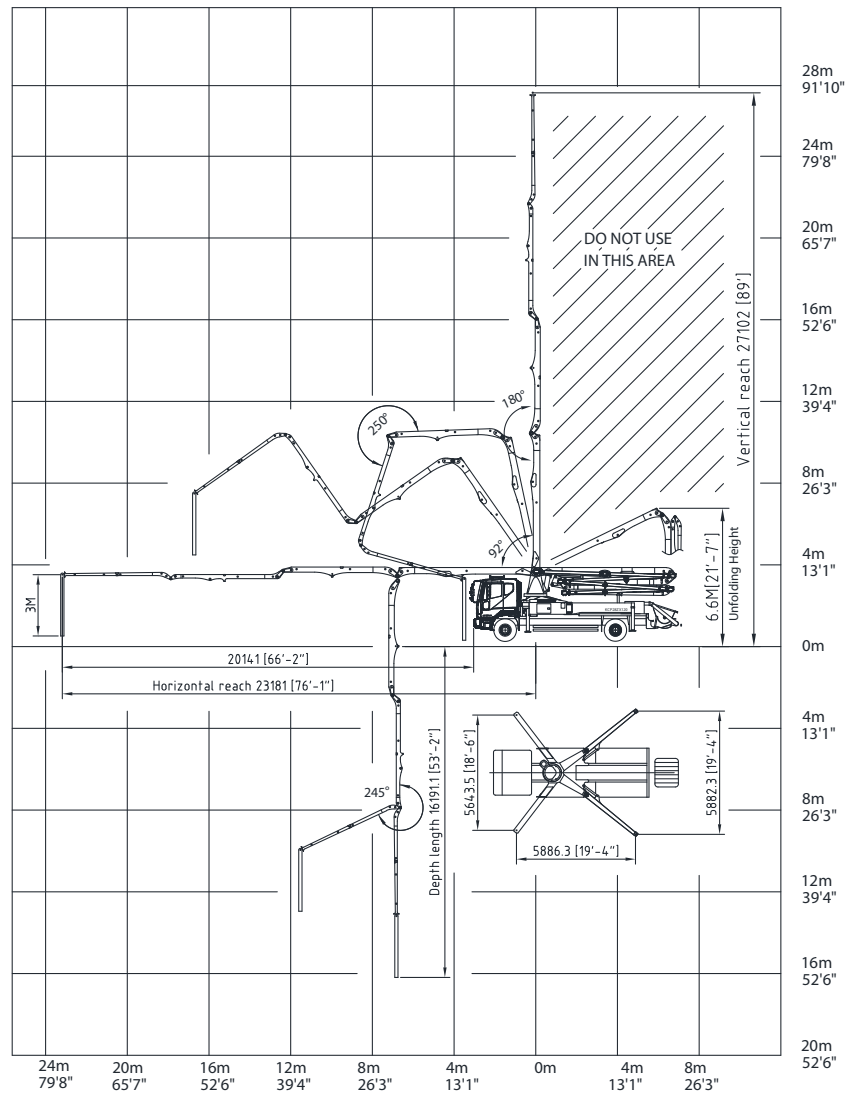
Available: MACK, FREIGHTLINER, AUTOCAR, etc.

PUMP SPECIFICATIONS

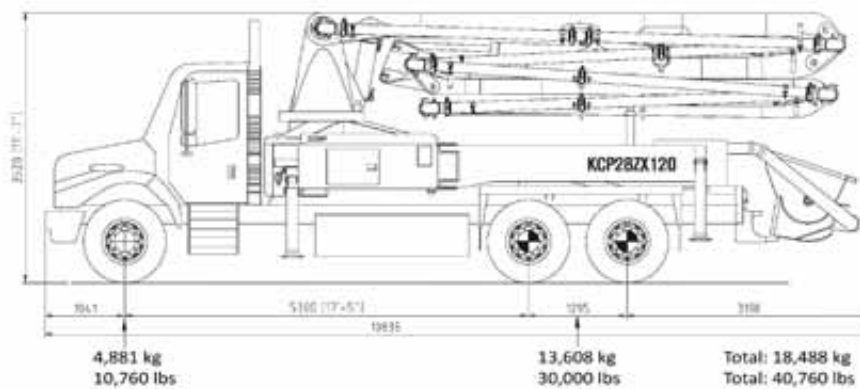
Maximum output	120 m³/h	[157 yd³/h]
Concrete cylinder	Ø230 x 1800mm [9" x 71"]	
Stroke per minute	32	
Concrete pressure	70 bar	[1015 psi]
Hopper capacity	0.6 m³	[21 ft³]
S-tube	Ø230 x Ø180mm [9" x 7"]	
Hydraulic pump	Rexroth A11VL0260	
Cycling system	Hydraulic with manual overrides	
Max aggregate size	40 mm	[1.5"]
Water tank volume	450 L	118.9 Gal
* Maximum theoretical values listed.		

Simply the Best.

WORKING DIAGRAM



WEIGHT DIAGRAM



*Photos and drawings are for illustrative purpose only.
 *Dimension will vary with different truck makers, models and specifications.
 *Right to make technical amendments reserved.



KCP24ZX120

BOOM SPECIFICATIONS

Vertical reach	23.2 M	[76' 2"]
Horizontal reach	19.8 M	[64' 11"]
Reach from front of truck	17.3 M	[57' 1"]
Unfolding height	5.4 M	[17' 9"]
Section articulation	94°/180°/260°/250°	
Rotation	370°	
Delivery line	125mm	[5"]
Proportional boom	Yes	
End hose length	3.5 M	[9' 10"]
Outrigger spread-front	5.6 M	[18' 5"]
Outrigger spread-rear	2.7 M	[8' 10"]
Max. outrigger weight	11,000 kg	[24251 lbs]

TRUCK MOUNTING OPTIONS

Available: MACK, FREIGHTLINER, AUTOCAR, etc.

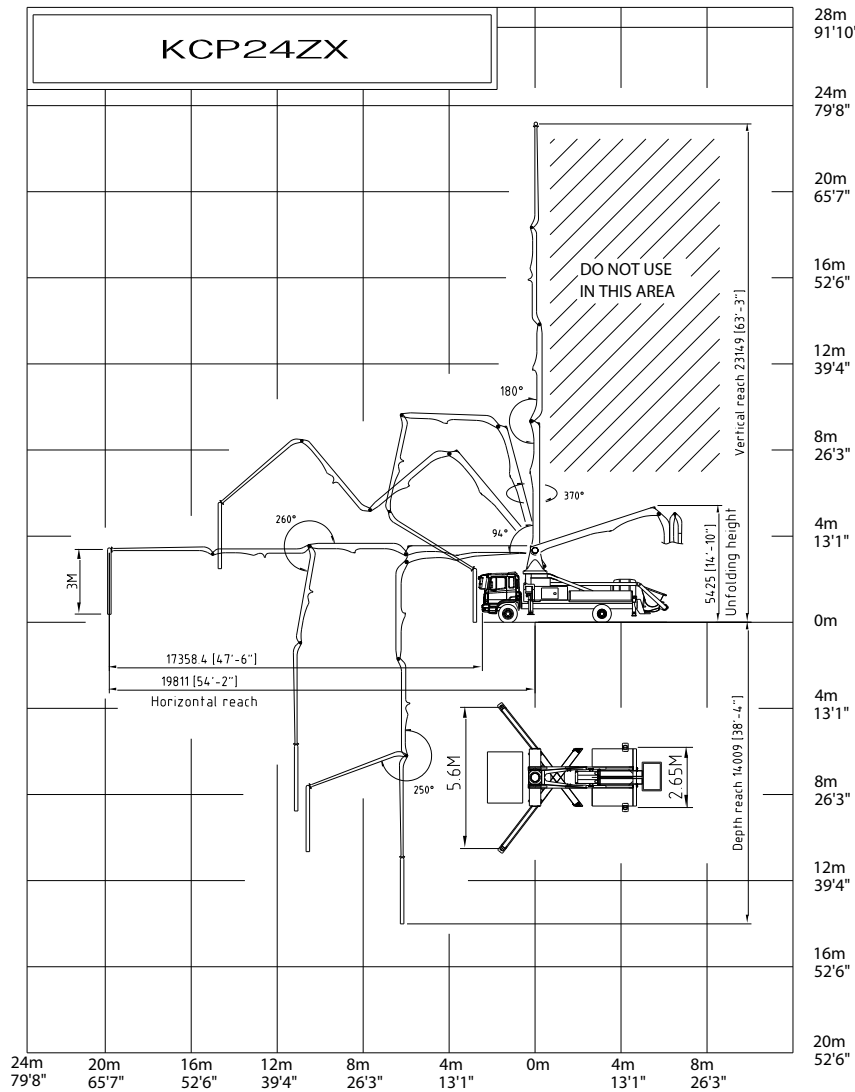
PUMP SPECIFICATIONS

Maximum output	120 m³/h	[157 yd³/h]
Concrete cylinder	Ø200 x 1800mm [8" x 71"]	
Stroke per minute	34	
Concrete pressure	69bar	[1015 psi]
Hopper capacity	0.6 m³	[21 ft³]
S-tube	Ø200 x Ø180mm [8" x 7"]	
Hydraulic pump	Rexroth A11VL0190	
Cycling system	Hydraulic with manual overrides	
Max aggregate size	40 mm	[1.5"]
Water tank volume	450L	118.9 Gal
* Maximum theoretical values listed.		

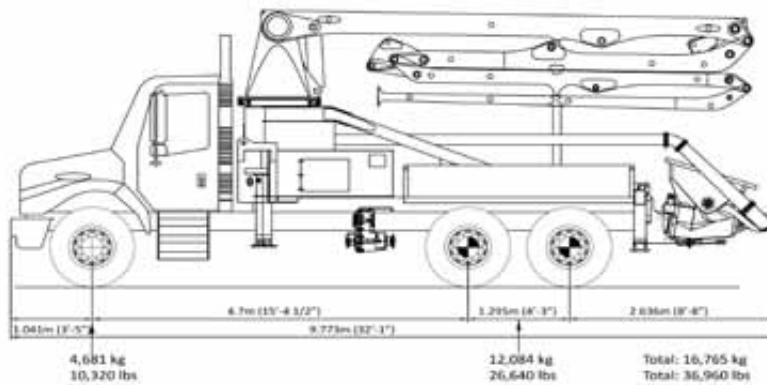
Simply the Best.

KCP24ZX120

WORKING DIAGRAM



WEIGHT DIAGRAM



*Photos and drawings are for illustrative purpose only.
 *Dimension will vary with different truck makers, models and specifications.
 *Right to make technical amendments reserved.



KCP20Z120

BOOM SPECIFICATIONS

Vertical reach	19.1 M	[62' 8"]
Horizontal reach	15.8 M	[51' 10"]
Reach from front of truck	12.9 M	[42' 4"]
Unfolding height	5.15 M	[16' 11"]
Section articulation	92°/190°/265°	
Rotation	370°	
Delivery line	125mm	[5"]
Proportional boom	Yes	
End hose length	3 M	[9' 10"]
Outrigger spread-front	2.93 M	[9' 7"]
Outrigger spread-rear	2.77 M	[9' 1"]
Max. outrigger weight	9,000 kg	[1,9842 lbs]

TRUCK MOUNTING OPTIONS

Available: MACK, FREIGHTLINER, AUTOCAR, etc.

PUMP SPECIFICATIONS

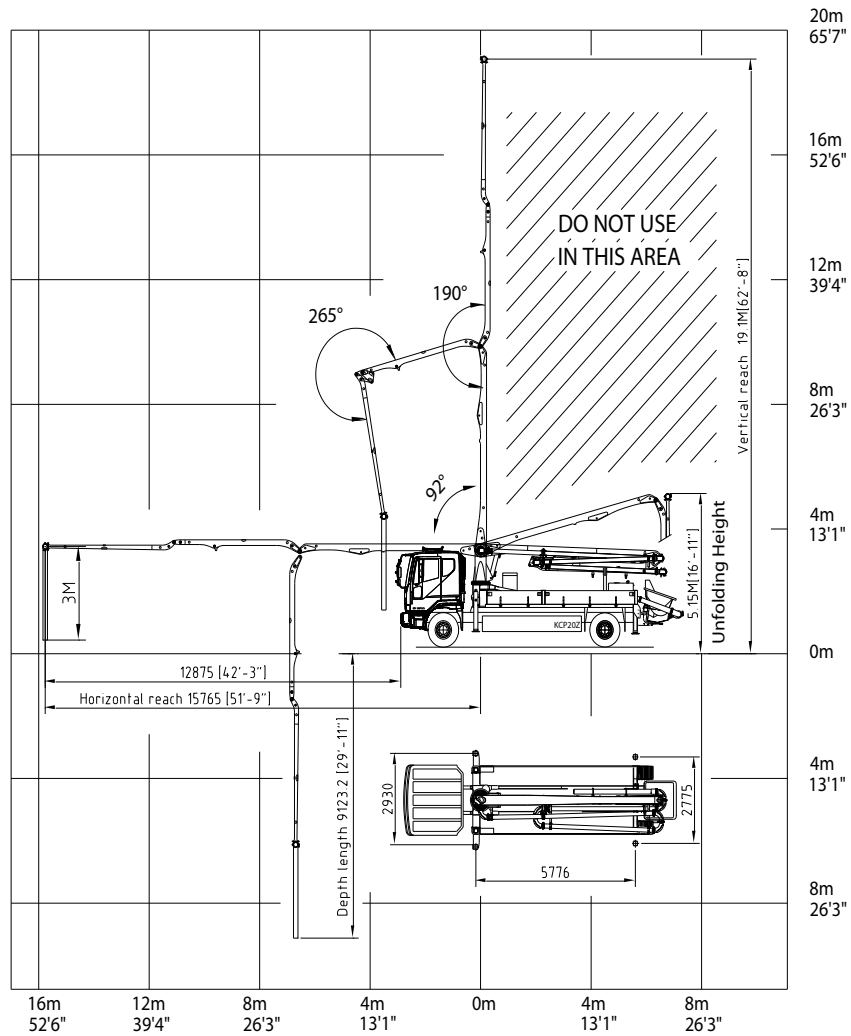
Maximum output	100 m³/h	[130 yd³/hr]
Concrete cylinder	Ø200 x 1800mm [8" x 71"]	
Stroke per minute	29	
Concrete pressure	171bar	[2480 psi]
Hopper capacity	0.6 m³	[21 ft³]
S-tube	Ø200 x Ø180mm [8" x 7"]	
Hydraulic pump	Rexroth A20VLO190	
Cycling system	Hydraulic with manual overrides	
Max aggregate size	40 mm	[1.5"]
Water tank volume	450L	118.9 Gal
* Maximum theoretical values listed.		

20ZHP- OPTIONAL

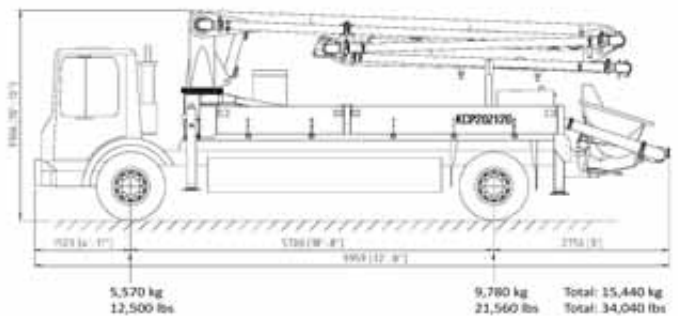
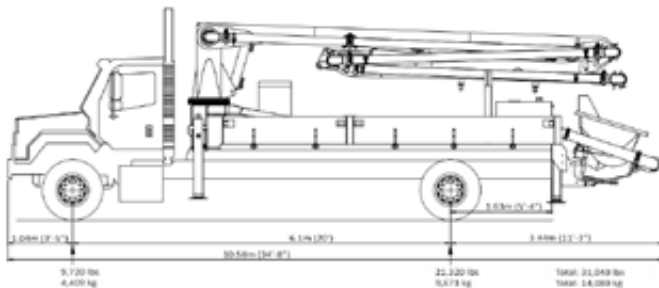
Maximum output	100 m³/h	[130 yd³/h]
Concrete cylinder	Ø200 x 1800mm [8" x 71"]	
Stroke per minute	29	
Concrete pressure	171 bar	[2480 psi]
Hydraulic pump	Rexroth A20VLO190	

Simply the Best.

WORKING DIAGRAM



WEIGHT DIAGRAM



*Photos and drawings are for illustrative purpose only.
 *Dimension will vary with different truck makers, models and specifications.
 *Right to make technical amendments reserved.

KCP CONCRETE PUMPS



Phone: 1-604-539-2137
Toll Free: 1-866-539-4244
Fax: 1-604-539-2176
Email: info@kcppumps.ca

www.kcppumps.ca

#201-5769 Production Way Langley, BC, CANADA V3A 4N5